

BINGHAM INDUSTRIES

2019 PRODUCT CATALOG



BINGHAM

ULTRA QUALITY SYSTEMS & SPARES



First and foremost - Thank you!

For the past 25 years, Bingham Industries has designed and built the water blasting industries most diverse selection of aftermarket pump parts as well as full line of systems, wear parts and accessories. At the same time, we have worked behind the scenes as a private label builder for some of the worlds largest equipment manufacturers. Our experience and expertise in the HP and UHP aftermarket industry is second to none.

In taking the time to review our product line and learn about our company, you will see that our commitment to quality and workmanship is what has helped build this company over the past quarter century. Our investment in the latest manufacturing techniques allows us to continually offer products priced below other equipment manufacturers and our code of ethics ensure that your company is treated with integrity every time we work together.

Our customers are the fuel that drive our engine forward. They have supported our growth and provided invaluable guidance to help us get to where we are today. In releasing this product catalog, we feel it is an excellent opportunity to say thank you to everyone we have worked with on this journey. We appreciate your help and support, and look forward to continuing to provide the outstanding products and pricing you have come to associate with Bingham Industries.

-Jeremy Bingham
President

Contents

High Performance Tooling	04
Sapphire Nozzles	14
Nozzle Carriers	18
Tube Cleaning Tips	22
Connectors & Fittings	26
Jetstream® Compatible Products	30
NLB® Compatible Products	38
Flow® Compatible Products	44
StoneAge® Compatible Products	52
Hoses & Flex Lance	54
UHP Rated Safety Suits	56
Terms & Conditions	58

BINGHAM

ULTRA QUALITY SYSTEMS & SPARES

High Performance Tooling

ULTRA QUALITY SYSTEMS & SPARES

B Wolf Air Rotational Gun

The Most Advanced Gun In The World.

Unmatched price, performance & reliability



Comes Fully Loaded

Every Wolf Gun is equipped with safety guards and a 2nd trigger assembly. Each Wolf Gun also includes a tool kit and an operations manual. Hose adapters for Type M hoses are also included if required.

Available in 16", 24", 36" & 44" versions, the Wolf Gun is an effective choice for every surface preparation job.

In service for over 15 years, the Wolf Gun is the pinnacle of UHP air rotational tools. Every component is purpose-built to increase performance or longevity. Easy to operate and easier to repair, this rock-solid tool features an industry leading air motor, innovative swivel design and up to 5 bearings to support the lance while it rotates. All of this results in a tool that spins faster, lasts longer and removes more while keeping parts costs lower. With over 500 units in service, Wolf technology has proven reliable and profitable for its owners and operators.

TECHNICAL SPECIFICATIONS

Pressure Ratings	0-44,000 PSI (3035 Bar)
Flow Rating	Up to 6.5 GPM (25 LPM)
Required Air	90 PSI / 30 CFM
Fluid Inlet	3/8 HP Nipple -- Adapters available
Weight	11-16 Lbs (Depending on length)
Included	2nd trigger, safety guards, tool kit

407000A



Innovation In Every Component

In designing the Wolf Gun, we analyzed other manufacturers UHP guns to determine their weaknesses. We then created a high performance product that resolved each and every flaw. We are proud to offer a product that is unlike any other on the market.

Features



Wolf Swivel Technology

Synonymous with performance, the Wolf Swivel is a floating swivel design. Designed as a zero-maintenance swivel, the Wolf housing is a sealed pressure unit. It only requires maintenance or grease during the rebuild process.



Bearing Alignment Packs

Unique to Bingham Industries, our bearing alignment packs ensure that the gun lance is supported by bearings in multiple locations. This ensures better performance and longer parts life than systems using brass or plastic bushings to support the lance.



Chicago Pneumatic Air motor

We believe that power equal performance. This is why Bingham Industries equips every Wolf Gun with a full 1 HP Chicago Pneumatic air motor, geared to either 3,200 or 6,000 RPM depending on the tool length.



B Wolf Floor Cleaning System

Ultra Performance In A Simple Package

Simplicity and performance are the name of the game and Bingham Industries gets it right with the Wolf Floor Cleaning System. Using water propulsion, this system features an 18" cleaning path at speeds up to 4500 RPM. For use from 10K to 55K, no other tool in the world is as versatile or user friendly.

With a massive cleaning path built into a simple package, nothing compares to the Wolf Floor Cleaning System.

Bingham Industries understands the need for high performance in a simple design. Our UHP rated floor cleaner eliminates the need for system air to rotate the swivel and still delivers up to 5,000 RPM rotational speeds over an 18" cleaning path inside a 22" housing.

With full vacuum capability, the Wolf Floor Cleaning System is a suitable choice for a variety of applications including concrete finishing, fireproofing, non-skid, automotive grate cleaning and much more.

18" Cleaning Path & No Air

Our fully adjustable spray bar lets you set the angle and aggression needed for your application. By adjusting the bar angle, you can control the rotational speed needed for your project and coating. The swivel and spray are fully driven by water pressure rather than air.



195500A

TECHNICAL SPECIFICATIONS	
Pressure Ratings	10,000 to 55,000 PSI (3035 Bar)
Flow Rating	Up to 13 GPM (50LPM)
Required Air	No Air Required
Fluid Inlet	9/16 HP Female - Adapters Available
Weight	68 Lbs.



The Perfect Blend Of Simplicity And Performance

The Wolf Floor Cleaning System provides a high performance, high yield cleaning system in a simple, straight forward package. Using water rotation, this system cleans at rates that meet or exceed other floor cleaning systems without the hassles of advanced air motor systems.

Features



Floating Seal Design

To ensure complete water capture, the Wolf Floor Cleaning System utilizes an active seal that adjusts to irregularities in the surface being cleaned, maintaining a complete seal at all times. This is especially effective on projects where complete water containment is a priority.



Rugged Crash Frame

The Wolf Floor Cleaning System is built around a rugged crash frame and housing system designed to withstand the abuse of the hardest surfaces, including non-skid, concrete and tile grout. The caster system allows for easy maneuverability in the tightest working spaces.



Ease of Use

Designed to be fully plug-and-play, the Wolf Floor Cleaning System features 3" cam-lock vacuum attachments and a high-flow swivel in a minimalist design to make set-up, operation and repairs simple and effortless. No other flooring tool is easier to use than the Wolf Floor Cleaning System.

High Performance Tooling

ULTRA QUALITY SYSTEMS & SPARES

B Wolf SS Wall System

One Size Fits All

Every Wolf SS Wall tool ships with 3 unique spray bars allowing you to quickly change your blasting profile - from ultra aggressive surface removal to light scarification. Custom spray bar configurations are available.



8-1/2" Cleaning Pattern

Cover four times the surface footage of regular UHP guns with full vacuum capabilities for complete water containment on your job site.

Lightweight and versatile, the Wolf SS wall system covers serious ground in an easy to use package.

Coupled with an on/off valve, the Wolf SS wall system covers an 8-1/2" cleaning path using 6 or 8 jets depending on the spray bar you use. Each system ships with three spray bars which can be quickly replaced and allow you to select the blasting angle and aggressiveness that suits your application. Other product features include double safety triggers, height adjustable wheels, a quick change brush seal and modular spray bars to limit damage the system receives from the blasting surface.

TECHNICAL SPECIFICATIONS

Pressure Ratings	0-44,000 PSI (3035 Bar)
Flow Rating	Up to 6.5 GPM (25 LPM)
Required Air	None
Fluid Inlet	3/8 HP Nipple -- Adapters available
Weight	13 Lbs
Included	Hard shell case, (3) spray bar configurations, operational manual

409000A



Features



Lightweight And Easy To Use

Low cost of ownership and ease of use are two hallmarks of this innovative wall tooling system. Find out what makes the Wolf SS Wall Tool system such a unique piece of equipment.



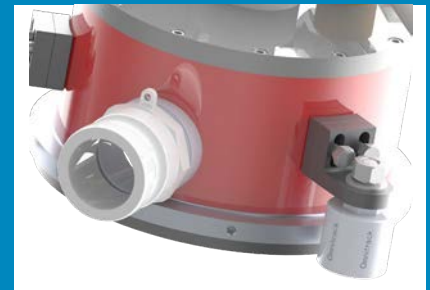
Light Weight Cannister

Our billet aluminum cannister is both light weight and easy to replace. It features a machined brush receiver port that allows you to replace our low cost sealing brushes in under 30 seconds. Simply loosen the mounting screws, replace and re-tighten.



Modular Spray Bar System

Our unique bar design provides a lower weight, lower cost spray bar that is easily field repairable. Additionally, our nozzle extenders allow for water attenuation which provides a more cohesive stream of jet profile than traditional spray bars.



Vacuum Enabled

The Wolf SS wall tool system comes fully vacuum enabled with a 3" cam lock port that allows for nearly complete water containment on your work site. Optional 2" cam lock ports are available at no additional cost.



B Wolf Modular Spraybar System

Massive Profile

Modular spraybars can be built to any size and scope with nearly unlimited jet configurations available.



Modular

Build the low-cost spraybar system your application requires with modular components

Designing the proper spraybar to efficiently complete your blasting project can be challenging when cost and build time are determined. Bingham Industries developed the modular spraybar system to allow you to mix-and-match components and overcome the most challenging demands in a fast and cost-effective manner.

How to design a modular spraybar system:

- 1 Choose a swivel assembly - Bingham Industries can provide a unique assortment of swivels for any spraybar application. Swivel options include 55,000 PSI, 12 GPM or ultra low profile designs.
- 2 Determine the overall diameter - Go bigger without breaking the bank. We've designed and built spraybar designs exceeding 8ft diameter in a lightweight, cost-effective package.
- 3 Select your jet pattern - Bingham Industries can build and install the exact jet pattern your application calls for. Retrofitting patterns is a simple, low cost service.



Scale To Meet Your Projects Needs

Low cost of ownership and ease of use are two hallmarks of this innovative wall tooling system. Find out what makes the Wolf SS Wall Tool system such a unique piece of equipment.



Multiple Swivel Options

The Wolf Modular Spraybar design allows for integration with any standard 40,000 or 55,000 PSI rated swivel assembly, allowing for robust low profile configurations when high performance in tight spaces is called for.



Modular Means Lower Repair Costs

Unlike traditional monolithic spraybars, modular spraybars allow for simple, low cost repairs in areas of the spraybar where damage or excessive wear has occur. Simply replace the worn components



Infinite Design Configurations

Regardless of your projects requirements, Bingham Industries has the experiences and resources necessary to build a modular spraybar system that meets your needs at a price point not possible in monolithic spraybar design.

Features

High Performance Tooling

ULTRA QUALITY SYSTEMS & SPARES

B 40,000 PSI Dump Hand Lance



TECHNICAL SPECIFICATIONS (40,000 PSI)

Pressure Ratings	0-40,000 PSI (2750 Bar)
Flow Rating	Up to 12 GPM (45 LPM)
Barrel Length	48 In. (122 CM)
Fluid Inlet	9/16 HP - Adapters available
Weight	16.5 Lbs.
Included	Dump gun with cartridge

184000A



B 20,000 PSI Dump Hand Lance



TECHNICAL SPECIFICATIONS (20,000 PSI)

Pressure Ratings	0-20,000 PSI (1379 Bar)
Flow Rating	Up to 30 GPM (285 LPM)
Barrel Length	48 In. (122 CM)
Fluid Inlet	9/16 MP-- Adapters available
Weight	16.5 Lbs.
Included	Dump gun with cartridge

182000A



Features



Double Dump Configuration

All Bingham Industries dump style hand lances are available in double dump trigger configuration for an additional level of safety



Zero Thrust Configuration

Bingham Industries provides dump style hand lances in a zero thrust style configuration for underwater and suspended cleaning applications.



Field Serviceable

Designed with a full billet handle assembly, all Bingham Industries dump style hand lances are field serviceable, allowing you to perform quick, low cost repairs.



B 40,000 PSI Scimitar Rotational Head

A True Breakthrough In Rotational Tool Design

Modern design and advanced performance for improved cleaning rates



Magnetic Speed Control

Quickly adjust from 1000 to 3000 RPM with the turn of a dial to locate the best removing rating possible.



2810 Series

CE

184800A

Includes Magnetic Speed Control for proper set-up on any surface.

If you have been looking for a modern, simple tool without the pressure loss and leakage of other rotating heads, Bingham Industries has the answer. This 40,000 PSI rated tool delivers more pressure to the working surface, resulting in faster removal.

Available in low flow and high flow configurations, with as little as 2.9 GPM per tool or as much as 5.5 GPM, the Scimitar rotational tool is the performance advancement you've been waiting for.

TECHNICAL SPECIFICATIONS

Pressure Ratings	0-40,000 PSI (2800 Bar)
Flow Rating	Up to 6.6 GPM (25 LPM)
Required Air	No Air Required
Fluid Inlet	1-1/8" HP Female -- Adapters available
Nozzles	2810 Series 7/16-20 Style
Weight	3.3 Lbs (1.5 kg)
Included	Tool, Repair Kit, Carrying Case, Sapphire Nozzles

B 22,000 PSI Scimitar Rotational Head

Uses Sapphire Nozzles For More Powerful Cleaning

Leave drilled tips behind and harness the power of sapphire for a stronger, longer stream of water.



2816 Series

Everything You Need

Every Scimitar 40k and 22k head comes fully loaded with a carrying case, repair kit, sapphire nozzles, adapters and an operating guide for quick set-up and deployment right out of the box.

CE

182800A

Requiring as little 2.7 GPM, the 22K rated Scimitar can be dialed in like no other tool!

If you haven't used sapphire nozzles at 22,000 PSI, you have been missing out on better cleaning rates and longer, cleaner jets of water. Designed to operate between 900-1300 RPM and up to 7.6 GPM, the Scimitar and its magnetic speed control system allow you to dial up the exact combination of flow, pressure and rotational speed that you need to get the job done.

TECHNICAL SPECIFICATIONS

Pressure Ratings	0-22,000 PSI (1500 Bar)
Flow Rating	Up to 7.6 GPM (28.7 LPM)
Required Air	No Air Required
Fluid Inlet	1-1/8" MP Female -- Adapters available
Nozzles	2816 Series 1/4 NPT Style
Weight	3.5 Lbs (1.6 kg)
Included	Tool, Repair Kit, Carrying Case, Sapphire Nozzles

High Performance Tooling

ULTRA QUALITY SYSTEMS & SPARES

B Dump Foot Pedals

Rugged Design In A Precision Package

Affordable and easy to maintain in the field, Dump Foot Pedals from Bingham Industries are high performance accessories in a tight package



TECHNICAL SPECIFICATIONS (40,000 PSI)

Pressure Ratings	0-44,000 PSI (3035 Bar)
Flow Rating	Up to 12 GPM (45 LPM)
Fluid Inlet/Outlet	9/16 HP -- Adapters available
Weight	15 Lbs (6.8 KG)
Included	Pedal assembly with cartridge

TECHNICAL SPECIFICATIONS (20,000 PSI)

Pressure Ratings	0-22,000 PSI (1517 Bar)
Flow Rating	Up to 35 GPM (130 LPM)
Fluid Inlet/Outlet	9/16 MP -- Adapters available
Weight	15 Lbs (6.8 KG)
Included	Pedal assembly with cartridge

TECHNICAL SPECIFICATIONS (15,000 PSI)

Pressure Ratings	0-15,000 PSI (1035 Bar)
Flow Rating	Up to 175 GPM (285 LPM)
Fluid Inlet/Outlet	3/4 NPT Female -- Adapters available
Weight	15 Lbs (6.8 KG)
Included	Pedal assembly with cartridge

Pedals



Always Going The Extra Mile In Product Design And Performance

Some companies treat foot pedals as a low cost, low priority item when it comes to product design and manufacture but Bingham Industries continues to invest in providing the best quality products while still delivering at the industries best prices.

Features



Quick Change Cartridges

Changing dump cartridges is a 30 second process using our heat-treated cartridge nut and industry leading cartridges. Simply unscrew the cartridge nut, replace the cartridge and screw the nut back into place.



Precision Dump Block

Bingham Industries goes the extra mile to deliver a precision, heat-treated dump block made from premium materials. CNC machined inlet and outlet ports stand up to repeated field use without taking damage.



Billet Pedal Assembly

Pedal breakage can shut down your job quickly which is why Bingham Industries is committed to building billet pedal components on all dump tools. This ensures longer product life and safer operation in the field for all blast personnel.



B 40,000 PSI Air Actuated Dump Pedal



All pressure ratings available as shown or with base plate

Master remote operation with Bingham Industries line of air activated dump pedals. These versatile valves can be mounted in a variety of configurations and operated by electronic solenoids, ball valves, air triggers and much more for remotely activating and deactivating UHP & HP water. Features a quick change cartridge system.

TECHNICAL SPECIFICATIONS (40,000 PSI)	
Pressure Ratings	0-44,000 PSI (3035 Bar)
Flow Rating	Up to 12 GPM (45 LPM)
Required Air	15-150 PSI
Fluid Inlet	9/16 HP -- Adapters available
Weight	8 Lbs.
Included	Air actuated pedal with cartridge

174400A



B 20,000 PSI Air Actuated Dump Pedal



TECHNICAL SPECIFICATIONS (20,000 PSI)	
Pressure Ratings	0-22,000 PSI (1517 Bar)
Flow Rating	Up to 35 GPM (130 LPM)
Required Air	15-150 PSI
Fluid Inlet	9/16 MP - Adapters available
Weight	8 Lbs.
Included	Air actuated pedal with cartridge

172400A



B 15,000 PSI Air Actuated Dump Pedal



TECHNICAL SPECIFICATIONS (15,000 PSI)	
Pressure Ratings	0-15,000 PSI (1035 Bar)
Flow Rating	Up to 175 GPM (285 LPM)
Required Air	15-150 PSI
Fluid Inlet	3/8 NPT Female-- Adapters available
Weight	8 Lbs.
Included	Air actuated pedal with cartridge

171400A



High Performance Tooling

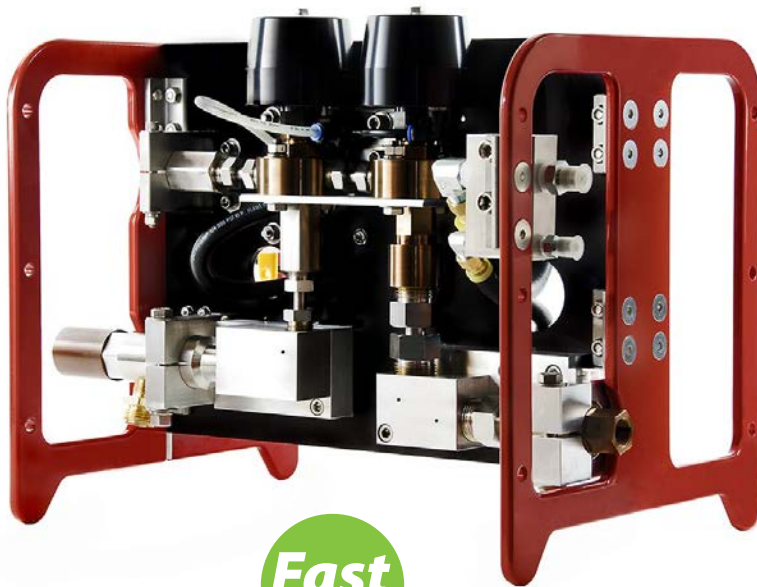
ULTRA QUALITY SYSTEMS & SPARES

B Multi-Mode Tumblebox

408800A

Fastest Valve Response Available !

Get further with smaller pressure spikes and better performance.



Fast
Performance

408800A



TECHNICAL SPECIFICATIONS

Flow Capability	12 GPM
Valve Activation	Water/Air
Air Pressure	90 PSI @ 30 CFM
Air Inlet	"CP" Style Fitting
Air Ports	#4 JIC & #6 JIC
Water Inlet	3/8 HP Female
Water Outlet	3/8 HP Female
Compatibility	All common pumps
Weight	42 Lbs.

SPARE PARTS

Valve Rebuild Kit	408101A
Air Switch	408072A
Metering Orifice	2807 Series

Performance, Value and Safety - Only the Multi-Mode Tumblebox combines all 3 in 1 product.

A significant departure from the way other multi-mode systems work, Bingham Industries builds a system that addresses the shortcomings of cartridge style systems. 2 independent valves drive this product, with one valve controlling dump water and a second valve controlling UHP water.

What makes this Multi-Mode better?

- 1 Dedicated Valves** - Using dual valves allows the Tumblebox to operate quicker and more efficiently than standard cartridge valves. No more washout or water cutting cartridges.
- 2 Faster Signal Time** - Get further away from your tumblebox during operation. Up to 50 feet per accessory while maintaining less than 1 second shutoff times.
- 3 Less Expensive Rebuilds** - Quickly and easily repair your Tumblebox for a fraction of the cost of cartridge systems. With longer parts life and less expensive rebuilds, the Multi-Mode Tumblebox is the most economical choice in the industry.

Designed in a powder-coated billet aluminum frame, the Multi-Mode Tumblebox uses the highest quality components to deliver a reliable, profitable product. Bingham Industries utilizes the best series Norgren air components to protect your air-rotational tools. All fittings and connectors are made of high-quality stainless steel and many are industry-standard dimensions for emergency repairs.

Our modified cutting valve is the heart of what makes this system better. As an air assist valve, it uses a combination of air and water pressure to open and close the valve. The velocity of UHP water in the system will close our valve in as little as 800 milliseconds at 15 feet. This type of performance increases operator safety when the air tool is deactivated, instantly shutting off UHP Water.

Highly reliable. Easy to operate. Easy and inexpensive to repair. These equipment characteristics will take your company to the next level. Speak with one of our sales associates to learn about applications where the Multi-mode will save you money, as well provide a faster return on investment than similar products offered by our competitors.



B Dry Shutoff Tumblebox

408000A

Don't Just Purchase Equipment

Invest in your company and get the very best



Billet Aluminum Crash Frame

Powder-coated red frame with anodized black mounting plate for additional strength

Bingham Industries Wolf dry shutoff tumblebox is a high performance valve system designed for use with Flow® Husky, intensifier and any "on-demand" water system.

By using our modified water cutting valve, we're able to offer the fastest mechanical valve available on the market. Our valve operates at 800 milliseconds from 15 feet using water assistance to open and close the poppet. This keeps your pumps and your staff safe in every circumstance.

The dry shutoff system also comes with an on/off air pedal installed for immediate shutdown in the event of an emergency. With repair life exceeding 300 hours, the Bingham dry shutoff tumblebox is an industry leading product

TECHNICAL SPECIFICATIONS	
Flow Capability	12 GPM
Valve Activation	Water/Air
Air Pressure	90 PSI @ 30 CFM
Air Inlet	"CP" Style Fitting
Air Ports	#4 JIC & #6 JIC
Water Inlet	3/8 HP Female
Water Outlet	3/8 HP Female
Compatibility	All common pumps
Weight	38 Lbs.



408000A

For use with intensifier-style pump and any pumping unit that can compensate at the pump.



Driven By Safety and Performance

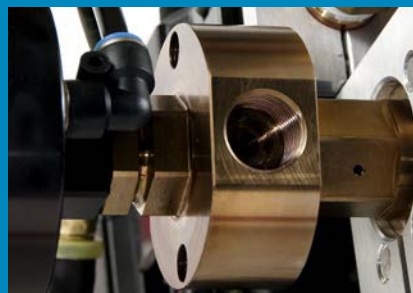
We are dedicated to building the best performing, safest water jetting equipment in the world. Our dry shutoff tumblebox has safety features found only from Bingham Industries.

Features



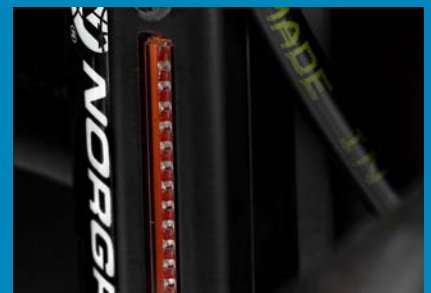
On/Off Air Foot Switch

In an emergency, immediate access to safety features is essential. Our on/off air foot switch is an immediate "deadman" switch that can be activated while the operators hands are full. Simply depressing the switch cuts all air and water to the water blasting gun, avoiding potentially dangerous situations.



The Industries Fastest Valve

Using a combination of air and water pressure to open and close our valve allows us to do it faster than anyone. With delay time at well under 1 second at 15 feet, our equipment can run out to 50 feet from the air tool and still remain OSHA compliant. Faster valve response time also leads to less parts usage.



Premium Air System by Norgren

The Excelon series by Norgren is their premium line of air regulators and lubricators and is used exclusively by Bingham Industries. We spare no expense in making sure your air tools are supplied with the best quality air available. Better air quality and air pressure means longer life for your air motors.

Sapphire Nozzles

ULTRA QUALITY SYSTEMS & SPARES

B 3/8-24 Style - Hornet® & High Cohesive® Style Replacement 2808 Series



The most commonly used sapphire nozzle in the world, the 3/8-24 sapphire nozzle is versatile and high performing.

Designed with an internal cavity that allows for a better, less turbulent stream of water, the Bingham style 3/8-24 sets the benchmark in performance and durability. All pieces are heat-treated for additional hardness and come with a laser-etch of the sapphire size.

DESCRIPTION	SAPPHIRE	PSI RATING	HEAT TREATED	BINGHAM #
3/8-24 Sapphire Nozzle	.004-.043 in	55,000 PSI	Yes	2808 Series
	0.1-1.1 mm	3,800 BAR		

2808 Series

Bulk pricing available



B 7/16-20 Style - OS7™ Style Replacement 2810 Series



Designed as a replacement for OS7 style nozzles, the Bingham Industries 7/16-20 nozzle is a cost effective alternative

For situations that require a slightly larger nozzle, generally for rotational purposes, the 7/16-20 style nozzle is a suitable replacement. This nozzle is available on sizes ranging from .004 to .043 for every blasting situation imaginable.

DESCRIPTION	SAPPHIRE	PSI RATING	HEAT TREATED	BINGHAM #
7/16-20 Sapphire Nozzle	.004-.043 in	40,000 PSI	Yes	2810 Series
	0.1-1.1 mm	2,800 BAR		

2810 Series

Bulk pricing available



B Metric 10 x 1.5 Style - Type P Style replacement 2809 Series



NEW
ON THE MARKET

Popular worldwide, the Metric 10 style nozzle is a high performance replacement for Type P and FORM 21 style nozzles.

This nozzle features an ID Hex and laser etching on the neck. With an internal cavity for higher performance, it works well in all scenarios at a price point that allows you to maintain your profits.

DESCRIPTION	SAPPHIRE	PSI RATING	HEAT TREATED	BINGHAM #
Metric 10 x 1.5 Sapphire Nozzle	.004-.043 in	55,000 PSI	Yes	2809 Series
	0.1-1.1 mm	3,800 BAR		

2809 Series

Bulk pricing available





B 1/4-28 Style - OS4™ Style Replacement 2804 Series

Finally, a viable alternative for OS4 style nozzles from a proven aftermarket source. Designed as a replacement for popular 40K pipe tools, our 1/4-28 nozzles provide a hard-hitting, low profile alternative as a better price point than the OEM offers.



DESCRIPTION	SAPPHIRE	PSI RATING	HEAT TREATED	BINGHAM #
1/4-28 Sapphire Nozzle	.004-.043 in	40,000 PSI	Yes	2804 Series
	0.1-1.1 mm	2,800 BAR		

2804 Series

Bulk pricing available



B UHP-X Style - Jetstream® Style Replacement 2811 Series

The same high performance as our 2808 series in a UHP-X style body. Now Jetstream style nozzle users have access to the same great pricing and performance as standard 2808 users. This high performance, low turbulence type design is available with the smaller hex head.



DESCRIPTION	SAPPHIRE	PSI RATING	HEAT TREATED	BINGHAM #
UHP-X Style Sapphire Nozzle	.004-.043 in	40,000 PSI	Yes	2811 Series
	0.1-1.1 mm	2,800 BAR		

2811 Series

Bulk pricing available



B Type D Style - M4 Slot Head Style 2805 Series

The oldest and most proven sapphire nozzle design, the Type D assembly is versatile, easy to repair and has the smallest profile of any sapphire nozzle.

Popular for ID tube cleaning and reaching the tightest spaces, the Type D Sapphire nozzle is a low cost option designed to deliver performance and reliability. Available with a slot head for easy screwdriver installation. Screws, sleeves and sapphires available as an assembly or individually.



DESCRIPTION	SAPPHIRE	PSI RATING	HEAT TREATED	BINGHAM #
Type D Assembly Sapphire Nozzle	.004-.043 in	40,000 PSI	Yes	2805 Series
	0.1-1.1 mm	2,800 BAR		

2805 Series

Bulk pricing available



Sapphire Nozzles

ULTRA QUALITY SYSTEMS & SPARES

B 1/8 NPT Style - AP2™ Compatible

2815 Series



Used in a wide variety of self-rotating tools, we've taken it up another notch by introducing sapphire loaded NPT cleaning tips for the best level of performance possible.

Designed with an internal cavity that provides the most cohesive stream of water possible, these 1/8 NPT style tips do not require flow straighteners to provide the highest level of cutting and cleaning performance in the industry.

DESCRIPTION	SAPPHIRE	PSI RATING	HEAT TREATED?	BINGHAM #
1/8 NPT Sapphire Nozzle	.004-.043 in	22,000 PSI	No	2815 Series
	0.1-1.1 mm	1,500 BAR		

2815 Series

Bulk pricing available



B 1/4 NPT Style - AP4™ Compatible

2816 Series



Designed as a replacement for AP4 style nozzles, the Bingham Industries 1/4 NPT Style nozzle is not only better performing than drilled nozzles - it's also more affordable!

For situations that require a hard hitting nozzle day after day, the sapphire loaded 1/4 NPT style is the only choice. Made from high quality stainless steel and featuring a Swiss made sapphire, these nozzles consistently throw a tighter, harder stream of water than any drilled tip available.

DESCRIPTION	SAPPHIRE	PSI RATING	HEAT TREATED	BINGHAM #
1/4 NPT Sapphire Nozzle	.004-.043 in	22,000 PSI	No	2816 Series
	0.1-1.1 mm	1,500 BAR		

2816 Series

Bulk pricing available



B 1/4 NPT Flush Style - AP4F™ Compatible

2817 Series



If you require the high performance of our 1/4 NPT style nozzles in a tighter package, Bingham Industries AP4F™ compatible nozzles are the only solution.

This nozzle features an external hex head with laser face marking to provide the highest cleaning power available in a smaller profile. This item is loaded with a premium Swiss sapphire and always delivers a longer, more cohesive stream of high pressure water.

DESCRIPTION	SAPPHIRE	PSI RATING	HEAT TREATED	BINGHAM #
1/4 NPT Flush Sapphire Nozzle	.004-.043 in	22,000 PSI	No	2817 Series
	0.1-1.1 mm	1,500 BAR		

2817 Series

Bulk pricing available





B BB-25 Style - Viper / Mushroom Style Replacement 2807 Series

Used as a metering orifice in most tumbleboxes, as well as a low profile blasting nozzle, the BB-25 style nozzle is versatile, low cost option that works well in many situations.

Also known as "Viper" or "Mushroom" style nozzles, the BB-25 is a high performance nozzle that uses a 3/8-24 retaining screw to hold it in place. Commonly used in multi-mode & dump style tumbleboxes to regulate flow, the BB-25 has many common uses.



DESCRIPTION	SAPPHIRE	PSI RATING	HEAT TREATED	BINGHAM #
BB-25 Sapphire Nozzle	.004-.043 in	55,000 PSI	No	2807 Series
	0.1-1.1 mm	3,800 BAR		
Retaining Screw		55,000 PSI	Yes	280322

2807 Series

Bulk pricing available



B Low Mass Style - Low-Profile Hard Hitter 2806 Series

With a similar profile to BB-25 style nozzles, the LowMass body features a shorter stem on the same overall profile.

Low Mass nozzles work well in low-profile situations and can be used as a replacement for 3/8-24 style nozzles if space is tight. The LowMass style is a nozzle that can be rebuilt and uses a 3/8-24 retaining screw to hold it in to place.



DESCRIPTION	SAPPHIRE	PSI RATING	HEAT TREATED	BINGHAM #
Low Mass Sapphire Nozzle	.004-.043 in	55,000 PSI	No	2806 Series
	0.1-1.1 mm	3,800 BAR	No	
Retaining Screw		55,000 PSI	Yes	280323

2806 Series

Bulk pricing available



B Nozzle Plugs & Accessories - All Styles

Our wide assortment of plugs and retaining screws means you have access to exactly what you need to get the job done quickly.



DESCRIPTION	BINGHAM #
3/8-24 Plug	280338
7/16-20 Plug	280335
Metric 10 x 1.5 Plug	280332
1/4-28 Plug	280342
UHP-X Type Plug	280340

DESCRIPTION	BINGHAM #
Type D Slot Plug	280302
BB-25 Plug	280311
LowMass Plug	280321
BB-25 Retaining Screw	280322
LowMass Retaining Screw	280323

Plugs

Bulk pricing available



Nozzle Carriers

ULTRA QUALITY SYSTEMS & SPARES

B 2-Jet Nozzle Carrier

401495



This slim profile 2-jet nozzle carrier is the perfect solution for tight spaces. The 2-jet, hard hitting pattern is an ideal choice for tough coatings and longer guns.

- 9/16 thread
- 3/8-24 nozzle ports
- Available in cone or button seat

DESCRIPTION	BINGHAM #	PSI RATING	HEAT TREATED	RECESSED
2-Jet Nozzle Carrier	401495	40,000 PSI	Yes	Yes

401495

Bulk pricing available



B 3-Jet Nozzle Carrier

401497



The 3-Jet Carrier is an excellent choice for harder coatings and specialty situations.

- 9/16 thread
- 3/8-24 nozzle ports
- Available in cone or button seat

DESCRIPTION	BINGHAM #	PSI RATING	HEAT TREATED	RECESSED
3-Jet Nozzle Carrier	401497	40,000 PSI	Yes	Yes

401497

Bulk pricing available



B 4-Jet Nozzle Carrier

401499



The most popular and versatile nozzle carrier we manufacture. It's versatile in its uses and provides excellent performance.

This carrier works as a 4-jet and can also be plugged to create a balanced 2 jet carrier. Optional wear caps are available for increased lifespan in harsh blasting environments.

- 9/16 thread
- 3/8-24 nozzle ports
- Available in cone or button seat

DESCRIPTION	BINGHAM #	PSI RATING	HEAT TREATED	RECESSED
4-Jet Nozzle Carrier	401499	40,000 PSI	Yes	Yes
Wear Cap w/ Screws	401600		Yes	

401499

Bulk pricing available





B 5-Jet Nozzle Carrier

401501



A functional 5-Jet alternative.

Designed as a longer lasting, higher performing alternative to 5-Jet carriers from other manufacturers, the Bingham Industries 5-Jet carrier is balanced and designed to outlast and outperform.

- 9/16 thread
- 3/8-24 nozzle ports
- Available in cone or button seat

DESCRIPTION	BINGHAM #	PSI RATING	HEAT TREATED	RECESSED
5-Jet Nozzle Carrier	401501	40,000 PSI	Yes	Yes

401501

Bulk pricing available



B 6-Jet Pineapple Nozzle Carrier

401510



The most versatile nozzle carrier in the industry.

Designed with (2) forward, (2) 45-degree and (2) 90 degree ports, this nozzle carrier is a great choice for tie downs, hard to clean places and jobs where having more options is a good thing.

- 9/16 thread
- 3/8-24 nozzle ports
- Available in cone or button seat

DESCRIPTION	BINGHAM #	PSI RATING	HEAT TREATED	RECESSED
6-Jet Pineapple Nozzle Carrier	401510	40,000 PSI	Yes	No

401510

Bulk pricing available



B 6-Jet Nozzle Carrier

401503



An excellent choice for paint and fire-proofing removal.

When you need more nozzles with lower flow, this nozzle carrier is the best option available, working well on asbestos, commercial paint and other light coatings.

- 9/16 thread
- 3/8-24 nozzle ports
- Available in cone or button seat

DESCRIPTION	BINGHAM #	PSI RATING	HEAT TREATED	RECESSED
6-Jet Nozzle Carrier	401503	40,000 PSI	Yes	No

401503

Bulk pricing available



Nozzle Carriers

ULTRA QUALITY SYSTEMS & SPARES

B 1-Jet Nozzle Carrier

401493



Designed for cutting and concrete demolition applications.

This speciality carrier features 1 nozzle port offset at 15 degrees and is ideal for cutting applications.

- 9/16 thread
- 3/8-24 nozzle ports
- Available in cone or button seat

DESCRIPTION	BINGHAM #	PSI RATING	HEAT TREATED	RECESSED
1-Jet Nozzle Carrier	401493	40,000 PSI	Yes	Yes

401493

Bulk pricing available



B 2-Jet Nozzle Carrier System

Replacement parts for 2-Jet carrier systems

- 9/16 thread
- 3/8-24 nozzle ports
- Available in cone or button seat



DESCRIPTION	BINGHAM #	PSI RATING	HEAT TREATED	RECESSED
2-Jet Rotating Hub	405806	40,000 PSI	Yes	Yes
Protective Cap	405805	-----	No	Yes
Nozzle Extender; 3/8-24	405812	40,000 PSI	Yes	No

2 Jet System

Bulk pricing available



B 5-Jet Unbalanced Nozzle Carrier

401502



A low cost replacement option for the marine coatings industry.

Featuring 5 nozzle ports at different angles and offsets, this Bingham Industries carrier is a direct replacement for popular marine coatings nozzle carriers.

- 9/16 thread
- 3/8-24 nozzle ports
- Available in cone or button seat

DESCRIPTION	BINGHAM #	PSI RATING	HEAT TREATED	RECESSED
5-Jet Nozzle Carrier	401502	40,000 PSI	Yes	No

401502

Bulk pricing available





B Advanced Performance

Any Situation. Any Coating.

Regardless the application, we have the solution you need to get the job done. Custom options are available upon request.

Bingham Industries line of nozzle carriers set the bar in performance & cost effectiveness.

We are the pioneers of the recessed port and have been building carriers with recessed ports for 20 years. We have also been at the forefront of promoting balanced nozzle carriers, which improve rotary swivel life and help lower costs.

We heat-treat all of our carriers for additional hardness so they stand up in the toughest blasting environments. These innovations allow us to offer the most advanced line of nozzle carriers in the world.



DESCRIPTION	RECESSED?	HEAT TREATED?	BALANCED?	BINGHAM #
1-Jet Offset	No	Yes	No	401493
2-Jet	Yes	Yes	Yes	401495
2-Jet NLB Style	No	Yes	Yes	405806
3-Jet	Yes	Yes	Yes	401497
4-Jet	Yes	Yes	Yes	401499
5-Jet	Yes	Yes	Yes	401501
5-Jet Flow Style	No	Yes	No	401502
6-Jet	No	Yes	Yes	401503
6-Jet Pineapple	No	Yes	Yes	401510

Keep Your Profits

Our line of cost-effective products allows you to keep your hard earned money



B 3/8-24 Style - Hornet® & High Cohesive® Style Replacement 2808 Series



The most commonly used sapphire nozzle in the world, the 3/8-24 Style sapphire nozzle is versatile and high performance.

Designed with an internal cavity that allows for a better, less turbulent stream of water, the Bingham style 3/8-24 sets the benchmark in performance and durability. All pieces are heat-treated for additional hardness and come with a laser-etch of the sapphire size.

DESCRIPTION	SAPPHIRE	PSI RATING	HEAT TREATED	BINGHAM #
3/8-24 Sapphire Nozzle	.004-.043 in	40,000 PSI	Yes	2808 Series
	0.1-1.1 mm	2,800 BAR		

2808 Series

Bulk pricing options are available



Tube Cleaning Tips

ULTRA QUALITY SYSTEMS & SPARES

B 1/4 Tube Tips

- 1/4 HP Thread
- Type D (M4 X .5) nozzle ports 2805 series
- Heat-treated
- 40,000 PSI Rated



BINGHAM #	JET PATTERN	HEAT TREATED	O.D.
401101	2 Jets @ 10 Degrees	Yes	.375"
401103	2 Jets @ 20 Degrees	Yes	.375"

BINGHAM #	JET PATTERN	HEAT TREATED	O.D.
401102	1 Jet @ 0 Degree	Yes	.375"
401104	1 Jet @ 10 Degrees	Yes	.375"

B 5/16 Tube Tips

- 5/16 Female Non-Gland Thread
- Type D (M4 X .5) nozzle ports 2805 series
- Heat-treated
- 40,000 PSI Rated



BINGHAM #	JET PATTERN	HEAT TREATED	O.D.
401170	1 Jet @ 0 Degree	Yes	.468"
401171	1 Jet @ 15 Degrees	Yes	.468"
401172	2 Jets @ 10 Degrees	Yes	.468"
401173	3 Jets @ 10 Degrees	Yes	.468"

BINGHAM #	JET PATTERN	HEAT TREATED	O.D.
401174	2 Jets @ 20 Degrees	Yes	.468"
401175	3 Jets @ 20 Degrees	Yes	.468"
401178	2 Jets @ 30 Degrees	Yes	.468"
401179	3 Jets @ 30 Degrees	Yes	.468"

B 3/8 Tube Tips

- 3/8 HP Thread
- Type D (M4 X .5) nozzle ports 2805 series
- Heat-treated
- 40,000 PSI Rated



BINGHAM #	JET PATTERN	HEAT TREATED	O.D.
401217	1 Jet @ 0 Degrees	Yes	.490"
401218	1 Jet @ 15 Degrees	Yes	.490"
401220*	2 Jets @ 10 degrees	Yes	.490"
401223	3 Jets @ 10 Degrees	Yes	.490"
401224	4 Jets @ 10 Degrees	Yes	.490"
401225*	2 Jets @ 20 Degrees	Yes	.490"
401227	3 Jets @ 20 Degrees	Yes	.490"
401228	4 Jets @ 20 Degrees	Yes	.490"

BINGHAM #	JET PATTERN	HEAT TREATED	O.D.
401229*	2 Jets @ 30 Degrees	Yes	.490"
401231	3 Jets @ 30 Degrees	Yes	.490"
401232	4 Jets @ 30 Degrees	Yes	.490"
401233*	2 Jets @ 45 Degrees	Yes	.490"
401235	3 Jets @ 45 Degrees	Yes	.490"
401236	4 Jets @ 45 Degrees	Yes	.490"
401237	3 Jets @ 50 Degrees	Yes	.590"

B 7/16 Tube Tips

- 7/16 Male Button Thread
- Type D (M4 X .5) nozzle ports 2805 series
- Heat-treated
- 40,000 PSI Rated



BINGHAM #	JET PATTERN	HEAT TREATED	O.D.
401325	2 Jets @ 20 Degrees	Yes	.550"
401327	2 Jets @ 20 Degrees 1 Jet @ 0 Degrees	Yes	.550"
401329	2 Jets @ 30 Degrees	Yes	.550"
401331	2 Jets @ 30 Degrees 1 Jet @ 0 Degrees	Yes	.550"
401333	2 Jets @ 45 Degrees	Yes	.550"
401335	2 Jets @ 45 Degrees 1 Jet @ 0 Degrees	Yes	.550"
401341	3 Jets @ 20 degrees	Yes	.650"
401342	4 Jets @ 20 Degrees	Yes	.650"
401343	3 Jets @ 30 Degrees	Yes	.650"
401344	4 Jets @ 30 Degrees	Yes	.650"

BINGHAM #	JET PATTERN	HEAT TREATED	O.D.
401346	3 Jets @ 45 Degrees	Yes	.650"
401347	4 Jets @ 45 Degrees	Yes	.650"
401349	2 Jets @ 20 Degrees 2 jets @ 180 Degrees	Yes	.650"
401351	2 Jets @ 30 Degrees 2 Jets @ 180 Degrees	Yes	.650"
401353	2 Jets @ 45 Degrees 2 Jets @ 180 Degrees	Yes	.650"
401355	2 Jets @ 20 Degrees 2 Jets @ 270 Degrees	Yes	.650"
401357	2 Jets @ 30 Degrees 2 Jets @ 270 Degrees	Yes	.650"
401359	2 Jets @ 45 Degrees 2 Jets @ 270 Degrees	Yes	.650"

** This tip is available with a carbide cutting blade welded into the face **



B 9/16 Tube Tips

- 9/16 Female Button or Cone
- Type D (M4 X .5) nozzle ports 2805 series

BINGHAM #	JET PATTERN	HEAT TREATED	O.D.
401410	1 Jet @ 0 Degrees	Yes	.750"
401411*	1 Jet @ 10 Degrees	Yes	.750"
401412*	2 Jets @ 10 Degrees	Yes	.750"
401413	3 Jets @ 10 Degrees	Yes	.750"
401414	4 Jets @ 10 Degrees	Yes	.750"
401417*	2 Jets @ 20 Degrees	Yes	.750"
401418	3 Jets @ 20 Degrees	Yes	.750"
401419	4 Jets @ 20 Degrees	Yes	.750"

BINGHAM #	JET PATTERN	HEAT TREATED	O.D.
401435	1 Jet @ 0 Degrees	Yes	.875"
401431*	1 Jet @ 10 Degrees	Yes	.875"
401432*	2 Jets @ 10 degrees	Yes	.875"
401433	3 Jets @ 10 Degrees	Yes	.875"
401434	4 Jets @ 10 Degrees	Yes	.875"
401437*	2 Jets @ 20 Degrees	Yes	.875"
401438	3 Jets @ 20 Degrees	Yes	.875"
401439	4 Jets @ 20 Degrees	Yes	.875"

BINGHAM #	JET PATTERN	HEAT TREATED	O.D.
401450	1 Jet @ 0 Degrees	Yes	1.00"
401451*	1 Jet @ 10 Degrees	Yes	1.00"
401452*	2 Jets @ 10 degrees	Yes	1.00"
401453	3 Jets @ 10 Degrees	Yes	1.00"
401454	4 Jets @ 10 Degrees	Yes	1.00"
401457*	2 Jets @ 20 Degrees	Yes	1.00"
401458	3 Jets @ 20 Degrees	Yes	1.00"
401459	4 Jets @ 20 Degrees	Yes	1.00"

- Heat-treated
- 40,000 PSI Rate

BINGHAM #	JET PATTERN	HEAT TREATED	O.D.
401422	2 Jets @ 30 Degrees	Yes	.750"
401423	3 Jets @ 30 Degrees	Yes	.750"
401424	4 Jets @ 30 Degrees	Yes	.750"
401427	2 Jets @ 45 Degrees	Yes	.750"
401428	3 Jets @ 45 Degrees	Yes	.750"
401429	4 Jets @ 45 Degrees	Yes	.750"

** This tip is available with a carbide cutting blade welded into the face **



BINGHAM #	JET PATTERN	HEAT TREATED	O.D.
401442	2 Jets @ 30 Degrees	Yes	.875"
401443	3 Jets @ 30 Degrees	Yes	.875"
401444	4 Jets @ 30 Degrees	Yes	.875"
401447	2 Jets @ 45 Degrees	Yes	.875"
401448	3 Jets @ 45 Degrees	Yes	.875"
401449	4 Jets @ 45 Degrees	Yes	.875"

** This tip is available with a carbide cutting blade welded into the face **



BINGHAM #	JET PATTERN	HEAT TREATED	O.D.
401462	2 Jets @ 30 Degrees	Yes	1.00"
401463	3 Jets @ 30 Degrees	Yes	1.00"
401464	4 Jets @ 30 Degrees	Yes	1.00"
401467	2 Jets @ 45 Degrees	Yes	1.00"
401468	3 Jets @ 45 Degrees	Yes	1.00"
401469	4 Jets @ 45 Degrees	Yes	1.00"

** This tip is available with a carbide cutting blade welded into the face **



B 9/16 Tube Tips - Specialty

BINGHAM #	JET PATTERN	HEAT TREATED	O.D.
401473	2 Jets @ 180 Degrees Side	Yes	1.00"
401474	4 Jets @ 180 Degrees Side	Yes	1.00"
401430	4 Jets @ 45 degrees 2 Jets @ 180 Degrees Side	Yes	.750"
401476	2 Jets @ 45 Degrees 2 Jets @ 60 Degrees	Yes	.875"

** Specialty configurations are available. Ask your sales representative for more details on patterns and pricing. **



Tube Cleaning Tips

ULTRA QUALITY SYSTEMS & SPARES

B 3/8 Tube Tips with Carbide Cutter

- 3/8 Thread
- Type D (M4 X .5) nozzle ports 2805 series
- Heat-treated
- 40,000 PSI Rated

BINGHAM #	JET PATTERN	HEAT TREATED	O.D.
401220C	2 Jets @ 10 degrees	Yes	.490"
401225C	2 Jets @ 20 Degrees	Yes	.490"

BINGHAM #	JET PATTERN	HEAT TREATED	O.D.
401229C	2 Jets @ 30 degrees	Yes	.490"
401233C	2 Jets @ 45 Degrees	Yes	.490"

**Custom Patterns available for no extra fee **



B 9/16 Tube Tips x .750 O.D. with Carbide Cutter

- 9/16 thread
- Type D (M4 X .5) nozzle ports 2805 series
- Heat-treated
- 40,000 PSI Rated

BINGHAM #	JET PATTERN	HEAT TREATED	O.D.
401412-XC	2 Jets @ 10 degrees	Yes	.750"
401417-XC	2 Jets @ 20 Degrees	Yes	.750"

BINGHAM #	JET PATTERN	HEAT TREATED	O.D.
401422-XC	2 Jets @ 30 degrees	Yes	.750"
401427-XC	2 Jets @ 45 Degrees	Yes	.750"

**Custom Patterns available for no extra fee **

Replace "X" in part number with desired seat configuration
Add -B to part number for button style
Add -C to part number for cone style



B 9/16 Tube Tips x .875 O.D. with Carbide Cutter

- 9/16 thread
- Type D (M4 X .5) nozzle ports 2805 series
- Heat-treated
- 40,000 PSI Rated

BINGHAM #	JET PATTERN	HEAT TREATED	O.D.
401432-XC	2 Jets @ 10 degrees	Yes	.875"
401437-XC	2 Jets @ 20 Degrees	Yes	.875"

BINGHAM #	JET PATTERN	HEAT TREATED	O.D.
401442-XC	2 Jets @ 30 degrees	Yes	.875"
401447-XC	2 Jets @ 45 Degrees	Yes	.875"

**Custom Patterns available for no extra fee **

Replace "X" in part number with desired seat configuration
Add -B to part number for button style
Add -C to part number for cone style



B 9/16 Tube Tips x 1.00 O.D. with Carbide Cutter

- 9/16 Thread
- Type D (M4 X .5) nozzle ports 2805 series
- Heat-treated
- 40,000 PSI Rated

BINGHAM #	JET PATTERN	HEAT TREATED	O.D.
401452-XC	2 Jets @ 10 degrees	Yes	1.00"
401457-XC	2 Jets @ 20 Degrees	Yes	1.00"

BINGHAM #	JET PATTERN	HEAT TREATED	O.D.
401462-XC	2 Jets @ 30 degrees	Yes	1.00"
401467-XC	2 Jets @ 45 Degrees	Yes	1.00"

**Custom Patterns available for no extra fee **

Replace "X" in part number with desired seat configuration
Add -B to part number for button style
Add -C to part number for cone style





B Type D Style - M4 Slot Head Style 2805 Series



The oldest and most proven sapphire nozzle design, the Type D Assembly is versatile, easy to repair and has the smallest profile of any sapphire nozzle.

Popular for ID Tube cleaning and getting into the tightest spaces, the Type D Sapphire nozzle is a low cost option designed to deliver performance and reliability. Available with a slot head for easy screwdriver installation. Screws, sleeves and sapphires available as assembly or individually.

DESCRIPTION	SAPPHIRE	PSI RATING	HEAT-TREATED	BINGHAM #
Type D Assembly Sapphire Nozzles	.004-.043 in	55,000 PSI	Yes	2805 Series
	0.1-1.1 mm	3,800 BAR		

2805 Series

Bulk pricing available



B Repair Jewel Sleeves



DESCRIPTION	BINGHAM #	MIN. LOT
Type D Jewel Sleeve	280200	Bag of 10

280200

Bulk pricing available



Connectors & Couplings

ULTRA QUALITY SYSTEMS & SPARES

B Rigid Lance Connectors

Other rigid lance coupling configurations available upon request. Call for pricing.



We have a diverse selection of rigid lance connectors for all of your lancing needs. All connectors are heat-treated and cut on a CNC to ensure the longest life span and prevent thread galling or breakage.

DESCRIPTION	BINGHAM #	HEAT TREATED	PSI RATING
1/4 RH HP x 1/4 RH HP	402201	Yes	40,000 PSI
1/4 RH HP X 1/4 LH HP	402202	Yes	40,000 PSI
1/4 LH HP X 1/4 LH HP	402203	Yes	40,000 PSI
3/8 RH HP x 3/8 RH HP	402301	Yes	40,000 PSI
3/8 RH HP X 3/8 LH HP	402302	Yes	40,000 PSI
3/8 LH HP x 3/8 LH HP	402303	Yes	40,000 PSI
9/16 RH Button X 9/16 RH Button	402401	Yes	40,000 PSI
9/16 RH Button x 9/16 LH Button	402402	Yes	40,000 PSI
9/16 LH Button x 9/16 LH Button	402403	Yes	40,000 PSI
9/16 RH HP x 9/16 RH HP	402410	Yes	40,000 PSI
9/16 RH HP x 9/16 LH HP	402411	Yes	40,000 PSI
9/16 LH HP x 9/16 LH HP	402412	Yes	40,000 PSI
9/16 RH HP x 3/8 RH HP	402415	Yes	40,000 PSI
9/16 LH HP x 3/8 LH HP	402416	Yes	40,000 PSI



B Tube Nipple Connectors

High quality, CNC cut threads for the longest lasting fittings in the industry.



High quality, CNC machined tube nipple connectors for use in all standard 40,000 PSI applications.

DESCRIPTION	BINGHAM #	PSI RATING
3/8 Nipple Hose Connector	402134	40,000 PSI
9/16 Nipple Hose Connector	402135	40,000 PSI
9/16 x 3/8 Hose Connector	402136	40,000 PSI
3/8 Collar	402003	40,000 PSI
3/8 Gland Nut	402004	40,000 PSI
9/16 Collar	402005	40,000 PSI
9/16 Gland Nut	402006	40,000 PSI
3/8 Plug	402510	40,000 PSI
9/16 Plug	402511	40,000 PSI





B Type M Style Hose Connectors



High quality, hardened Type M fittings from Bingham Industries hold up longer than the competition.

Always subject to the best machining practices, even on something as simple as a hose fitting, we make sure to deliver the best possible product every time. Our fittings are made of the highest quality PH grade stainless steel and are never die-cut. As a result, our threads last longer than other manufacturers

DESCRIPTION	BINGHAM #	HEAT TREATED	PSI RATING
1-1/8 x 1-1/8 Type M	402801	Yes	40,000 PSI
1-1/8 x 7/8 Type M	402802	Yes	40,000 PSI
1-1/8 x 9/16 Type M	402803	Yes	40,000 PSI
7/8 x 7/8 Type M	402804	Yes	40,000 PSI
7/8 x 7/8 Type M	402804-60	Yes	60,000 PSI
7/8 x 9/16 Type M	402805	Yes	40,000 PSI
9/16 x 9/16 Type M	402806	Yes	40,000 PSI
9/16 x 9/16 Type M	402806-60	Yes	60,000 PSI



B Speciality Fittings

All specialty fittings are heat treated for additional hardness and longevity.



Bingham Industries stocks a wide variety of specialty fittings for adapting uncommon hose and fitting types. These fittings may also be used to adapt from pumps and accessories to standard hose fitting types.

DESCRIPTION	BINGHAM #	HEAT TREATED	PSI RATING
1-1/8 Type M X 9/16 Male HP	402807	Yes	40,000 PSI
1-1/8 Type M X 9/16 Female HP	402808	Yes	40,000 PSI
1-1/8 Type M X 3/8 Male HP	402809	Yes	40,000 PSI
1-1/8 Type M X 3/8 Female HP	402810	Yes	40,000 PSI
7/8 Type M X 9/16 Male HP	402811	Yes	40,000 PSI
7/8 Type M X 9/16 Male HP	402811-60	Yes	60,000 PSI
7/8 Type M X 9/16 Female HP	402812	Yes	40,000 PSI
7/8 Type M X 3/8 Male HP	402813	Yes	40,000 PSI
7/8 Type M X 3/8 Male HP	402813-60	Yes	60,000 PSI
7/8 Type M X 3/8 Female HP	402814	Yes	40,000 PSI
9/16 Type M X 9/16 Male HP	402815	Yes	40,000 PSI
9/16 Type M X 9/16 Female HP	402816	Yes	40,000 PSI
9/16 Type M X 3/8 Male HP	402817	Yes	40,000 PSI
9/16 Type M X 3/8 Male HP	402817-60	Yes	60,000 PSI
9/16 Type M X 3/8 Female HP	402818	Yes	40,000 PSI



Connectors & Couplings

ULTRA QUALITY SYSTEMS & SPARES

B 4-Way Unions

Convert your 4-way union to fit any hose configuration

Designed to function as a stand-alone product or in conjunction with our line of specialty connectors, the 4-way union can be adapted to meet any configuration.



DESCRIPTION	BINGHAM #	HEAT TREATED	PSI RATING
3/8 Port 4-Way Union	402500	No	40,000 PSI
9/16 Port 4-Way Union	402501	No	40,000 PSI
3/8 Collar	402003	No	40,000 PSI
3/8 Gland Nut	402004	No	40,000 PSI
9/16 Collar	402005	No	40,000 PSI
9/16 Gland Nut	402006	No	40,000 PSI
3/8 Plug	402510	No	40,000 PSI
9/16 Plug	402511	No	40,000 PSI

Combine with any of our specialty connectors to create a Type M style union for use in any situation.



B Y-Block Connectors

May be mounted with Type M Adapters for easy set-up on multiple pump brands

Split your UHP Water the right way - with a Y-Block designed to reduce flow restriction and turbulence.



DESCRIPTION	BINGHAM #	HEAT TREATED	PSI RATING
3/8 x 3/8 x 3/8 Port Y-Block	402554	No	40,000 PSI
9/16 x 3/8 x 3/8 Y-Block	402552	No	40,000 PSI
9/16 x 9/16 x 9/16 Y-Block	402550	No	40,000 PSI
3/8 Collar	402003	No	40,000 PSI
3/8 Gland Nut	402004	No	40,000 PSI
9/16 Collar	402005	No	40,000 PSI
9/16 Gland Nut	402006	No	40,000 PSI
3/8 Plug	402510	No	40,000 PSI
9/16 Plug	402511	No	40,000 PSI





B Elbow Connectors



DESCRIPTION	BINGHAM #	HEAT TREATED	PSI RATING
9/16 Female x 9/16 Female	402540	No	40,000 PSI
9/16 Female x 3/8 Female	402541	No	40,000 PSI
3/8 Female x 3/8 Female	402542	No	40,000 PSI
3/8 Collar	402003	No	40,000 PSI
3/8 Gland Nut	402004	No	40,000 PSI
9/16 Collar	402005	No	40,000 PSI
9/16 Gland Nut	402006	No	40,000 PSI
3/8 Plug	402510	No	40,000 PSI
9/16 Plug	402511	No	40,000 PSI

Combine with any of our specialty connectors to create a Type M style union for use in any situation.



B T-Block Connectors



DESCRIPTION	BINGHAM #	HEAT TREATED	PSI RATING
9/16 x 9/16 x 9/16 T-Block	402570	No	40,000 PSI
9/16 x 3/8 x 3/8 T-Block	402571	No	40,000 PSI
3/8 x 3/8 x 3/8 T-Block	402572	No	40,000 PSI
3/8 Collar	402003	No	40,000 PSI
3/8 Gland Nut	402004	No	40,000 PSI
9/16 Collar	402005	No	40,000 PSI
9/16 Gland Nut	402006	No	40,000 PSI
3/8 Plug	402510	No	40,000 PSI
9/16 Plug	402511	No	40,000 PSI



JETSTREAM® COMPATIBLE

ULTRA QUALITY SYSTEMS & SPARES

Jetstream is trademark of Jetstream of Houston, LLC
 Bingham Industries & Jetstream have no affiliation and no endorsement by Jetstream is implied
 Products shown on this page are manufactured by Bingham Industries

15,000 PSI STYLE

INDIVIDUAL SPARE PARTS

UNI-VALVE & SEAL KIT



DESCRIPTION	OEM #	BINGHAM #
15K Univalve	52870	151400A
15K Seal Kit	52875	151405A

CARTRIDGES



DESCRIPTION	OEM #	BINGHAM #
C-15 Dump	50902	152100A
Bypass	50234	152400A
Hydro-Throttle	51899	151100A

PACKING SETS



DESCRIPTION	OEM #	BINGHAM #
#9 Packing Set	51802	151451
#10 Packing Set	50658	151452
#11 Packing Set	50659	151453
#12 Packing Set	50660	151454
#13 Packing Set	50661	151455
#15 Packing Set	50662	151456

PLUNGERS



DESCRIPTION	OEM #	BINGHAM #
#9 Plunger	51808	151441
#10 Plunger	51721	151442
#11 Plunger	51722	151443
#12 Plunger	51723	151444
#13 Plunger	51724	151445
#15 Plunger	51726	151446

FLUID END REPAIR

DESCRIPTION	OEM #	BINGHAM #
Deflector	26487	151471
Plunger Coupling	51736	151472
Plungers	See List Above	
#9 Gland Nut	51809	151474
#10 Gland Nut	51647	151475
#11 Gland Nut	51651	151476
#12 Gland Nut	51707	151477
#13 Gland Nut	51744	151478
#15 Gland Nut	51746	151479
O-Ring #9-15	26387	151473
Packing Sets	See List Above	

DESCRIPTION	OEM #	BINGHAM #
Stuffing Box #09-11	52872	151481
Stuffing Box #12-15	52873	151482
Univalve & Seal Kit	See List Above	
Manifold	52864	151485
Manifold Bolt	26500	151486
Lube Harness	51975	151487
Trunnion	51689	151488
Rupture Disc Assy.	51035	162150A
1/2" 14.0K Disc	51050	162140
1/2" 16.0K Disc	51051	162160
1/2" 18.0K Disc	55316	162180

REBUILD KITS

MINOR REPAIR KIT

This service kit contains:

- (6) Packing Sets
- (3) Univalve Seal Kits
- (2) Bypass Repair Cartridges

DESCRIPTION	BINGHAM #
#9 Style	JS1509SK
#10 Style	JS1510SK
#11 Style	JS1511SK
#12 Style	JS1512SK
#13 Style	JS1513SK
#15 Style	JS1515SK

MAJOR REPAIR KIT

This service kit contains:

- (3) 15K Univalves
- (6) Packing Sets
- (3) Univalve Seal Kits
- (2) Bypass Repair Cartridges
- (10) Rupture Discs

DESCRIPTION	BINGHAM #
#9 Style	JS1509MK
#10 Style	JS1510MK
#11 Style	JS1511MK
#12 Style	JS1512MK
#13 Style	JS1513MK
#15 Style	JS1515MK

PUMP OVERHAUL KIT

This service kit contains:

- (3) Plungers
- (3) 15K Univalves
- (9) Packing Sets
- (6) Univalve Seal Kits
- (3) Bypass Repair Cartridges
- (10) Rupture Discs

DESCRIPTION	BINGHAM #
#9 Style	JS1509PK
#10 Style	JS1510PK
#11 Style	JS1511PK
#12 Style	JS1512PK
#13 Style	JS1513PK
#15 Style	JS1515PK



20,000 PSI STYLE

INDIVIDUAL SPARE PARTS

UNI-VALVE & SEAL KIT



DESCRIPTION	OEM #	BINGHAM #
20K Univalve	51790	151500A
20K Seal Kit	50465	151505A

CARTRIDGES



DESCRIPTION	OEM #	BINGHAM #
C-20 Dump	51869	152200A
Bypass	52255	152500A
Hydro-Throttle	51963	151300A

PACKING SETS



DESCRIPTION	OEM #	BINGHAM #
#8 Packing Set	51857	151551
#9 Packing Set	51826	151552
#10 Packing Set	52509	151553
#11 Packing Set	55877	151554

PLUNGERS



DESCRIPTION	OEM #	BINGHAM #
#8 Plunger	50301	151541
#9 Plunger	51828	151542
#10 Plunger	52504	151543
#11 Plunger	54966	151544

FLUID END REPAIR

DESCRIPTION	OEM #	BINGHAM #
Deflector	26487	151471
Plunger Coupling	51736	151472
Plungers	See List Above	
#8 Gland Nut	51832	151574
#9 Gland Nut	51829	151575
#10 Gland Nut	52501	151576
#11 Gland Nut	54828	151577
O-Ring #8-11	26416	151573
Packing Sets	See List Above	

DESCRIPTION	OEM #	BINGHAM #
Stuffing Box #08-09	50306	151581
Stuffing Box #10-11	52502	151582
Univalve & Seal Kit	See List Above	
Manifold	51818	151585
Manifold Bolt	26500	151486
Lube Harness	51975	151487
Rupture Disc Assy.	51890	161200A
1/4" 24.0K Disc	51838	161240
1/4" 27.0K Disc	51837	161270

REBUILD KITS

MINOR REPAIR KIT

This service kit contains:

- (6) Packing Sets
- (3) Univalve Seal Kits
- (2) Bypass Repair Cartridges

DESCRIPTION	BINGHAM #
#8 Style	JS2008SK
#9 Style	JS2009SK
#10 Style	JS2010SK
#11 Style	JS2011SK

MAJOR REPAIR KIT

This service kit contains:

- (3) 20K Univalves
- (6) Packing Sets
- (3) Univalve Seal Kits
- (2) Bypass Repair Cartridges
- (10) Rupture Discs

DESCRIPTION	BINGHAM #
#8 Style	JS2008MK
#9 Style	JS2009MK
#10 Style	JS2010MK
#11 Style	JS2011MK

PUMP OVERHAUL KIT

This service kit contains:

- (3) Plungers
- (3) 20K Univalves
- (9) Packing Sets
- (6) Univalve Seal Kits
- (3) Bypass Repair Cartridges
- (10) Rupture Discs

DESCRIPTION	BINGHAM #
#8 Style	JS2008PK
#9 Style	JS2009PK
#10 Style	JS2010PK
#11 Style	JS2011PK

JETSTREAM® COMPATIBLE

ULTRA QUALITY SYSTEMS & SPARES

Jetstream is trademark of Jetstream of Houston, LLC
 Bingham Industries & Jetstream have no affiliation and no endorsement by Jetstream is implied
 Products shown on this page are manufactured by Bingham Industries

40,000 PSI STYLE

B 40K Univalve

537950A



Compatible with Jetstream® 53495

DESCRIPTION	BINGHAM #	OEM #
40,000 PSI Univalve Assembly	537950A	53495
40,000 PSI Univalve Seal Kit	537955A	54143

537950A

Bulk pricing available



B 40K Packing



Compatible with Jetstream 54116, 54117 & 54118

DESCRIPTION	BINGHAM #	OEM #
#6 Packing	537706	54116
#7 Packing	537707	54117
#8 Packing	537708	54118

Packing

Bulk pricing available



B 40K Sleeve



Compatible with Jetstream 54906, 54907 & 54908

DESCRIPTION	BINGHAM #	OEM #
#6 Sleeve	537806A	54096
#7 Sleeve	537807A	54097
#8 Sleeve	537808A	54098

Sleeve

Bulk pricing available



B 40K Guide Bushing



Compatible with Jetstream 27479, 27480 & 27481

DESCRIPTION	BINGHAM #	OEM #
#6 Guide Bushing	537606	27479
#7 Guide Bushing	537607	27480
#8 Guide Bushing	537608	27481

Bushing

Bulk pricing available





40,000 PSI STYLE

B 40K Face Seal 537400A

Compatible with Jetstream 54125



Description	BMI #	OEM #
40,000 PSI Face Seal Assembly	537400A	54125

537400A

Bulk pricing available



B 40K Manifold 537500

Compatible with Jetstream 53456



Description	BMI #	OEM #
40,000 PSI Manifold	537500	53456

537500



B 40K Gland Nut 537550

Compatible with Jetstream 54101



DESCRIPTION	BINGHAM #	OEM #
40,000 PSI Gland Nut	537550	54101
40,000 PSI Gland Nut O-Ring	537573	26464

537550

Bulk pricing available



FLUID END REPAIR

DESCRIPTION	OEM #	BINGHAM #
Deflector	26487	151471
Plunger Coupling	51736	151472
Manifold Bolt	26500	151486
#6 Plunger	53561	537406
#7 Plunger	53562	537407
#8 Plunger	53563	537408

DESCRIPTION	OEM #	BINGHAM #
Stuffing Box	54099	537801
Rupture Disc Assy.	53505	161400A
1/4" 45.0K Disc	28615	161450
1/4" 50.0K Disc	27484	161500
Gauge, 0-60K	27488	886098
Anti-Vibration Gland Assy.	28090	402016A

JETSTREAM® COMPATIBLE

ULTRA QUALITY SYSTEMS & SPARES

Features

Advanced Design

Minor design and component improvements across the cartridge product line have resulted in major performance and life span improvements while still allowing Bingham Industries to reduce our price point below other manufacturers.



Manufacturing Performance

High quality manufacturing practices lead to longer product life



Improved O-Ring Quality

UHP rated o-rings for longer life and better sealing capacity



Better internal seal life

Improved sealing technology inside the cartridge body provide for longer life

B 15K C-20 Dump Cartridge

152100A



Compatible with Jetstream® 50902

DESCRIPTION	BINGHAM #	OEM #
15,000 PSI C-20 Dump Cartridge	152100A	50902

152100A

Bulk pricing available



B 15K Bypass Cartridge

152400A



Compatible with Jetstream 50234

DESCRIPTION	BINGHAM #	OEM #
15,000 PSI Bypass Cartridge	152400A	50234

152400A

Bulk pricing available



B 15K Hydro-Throttle Cartridge

151100A



Compatible with Jetstream 51899

DESCRIPTION	BINGHAM #	OEM #
15,000 PSI Hydro-Throttle Repair Cartridge	151100A	51899

151100A

Bulk pricing available





B 20K C-20 Dump Cartridge

152200A

Compatible with Jetstream® 50902



DESCRIPTION	BINGHAM #	OEM #
20,000 PSI C-20 Dump Cartridge	152200A	50902

152200A

Bulk pricing available



B 20K Bypass Cartridge

152500A

Compatible with Jetstream 52255



DESCRIPTION	BINGHAM #	OEM #
20,000 PSI Bypass Cartridge	152500A	52255

152500A

Bulk pricing available



B 20K Hydro-Throttle Cartridge

151300A

Compatible with Jetstream 51963



DESCRIPTION	BINGHAM #	OEM #
20,000 PSI Hydro-Throttle Repair Cartridge	151300A	51963

151300A

Bulk pricing available



*Jetstream is trademark of Jetstream of Houston, LLC
Bingham Industries & Jetstream have no affiliation and no endorsement by Jetstream is implied
Products shown on this page are manufactured by Bingham Industries*

JETSTREAM® COMPATIBLE

ULTRA QUALITY SYSTEMS & SPARES

B 40K C-40 Dump Cartridge

151200A



Compatible with Jetstream® 53475

DESCRIPTION	BINGHAM #	OEM #
40,000 PSI C-40 Dump Cartridge	151200A	53475

151200A

Bulk pricing available



B 40K Bypass Cartridge

152300A



Compatible with Jetstream 53725

DESCRIPTION	BINGHAM #	OEM #
40,000 PSI Bypass Cartridge	152300A	53725

152300A

Bulk pricing available



B 40K Hydro-Throttle Cartridge

152600A

Picture
Not
Available

Compatible with Jetstream 53609

DESCRIPTION	BINGHAM #	OEM #
40,000 PSI Hydro-Throttle Repair Cartridge	152600A	53609

152600A

Bulk pricing available



B 40K Multi-Mode Cartridge

510000A



Compatible with Jetstream 54014

DESCRIPTION	BINGHAM #	OEM #
40,000 PSI Multi-Mode Cartridge	510000A	54014

510000A

Bulk pricing available





*Jetstream is trademark of Jetstream of Houston, LLC
Bingham Industries & Jetstream have no affiliation and no endorsement by Jetstream is implied
Products shown on this page are manufactured by Bingham Industries*

B 40K Bypass Diffuser 152450

Picture
Not
Available

Compatible with Jetstream® 53726

DESCRIPTION	BINGHAM #	OEM #
40,000 PSI Bypass Diffuser	152450	53726

152450

Bulk pricing available



B 40K Multi-Mode Diffuser 510050

Picture
Not
Available

Compatible with Jetstream 54404

DESCRIPTION	BINGHAM #	OEM #
40,000 PSI Multi-Mode Diffuser	510050	54404

510050

Bulk pricing available



TORNADO COMPATIBLE



405502

Jetstream Style

Swivel Shaft

Replacement for Jetstream 53708
Rated up to 40,000 PSI
Precision ground shaft



405500A

Jetstream Style

Seal Kit

Replacement for Jetstream 53775
Rated up to 40,000 PSI
High quality construction



405504A

Jetstream Style

Shaft Seal

Replacement for Jetstream Style
UHP Rated O-Rings
High quality UHMW-PE material



405503

Jetstream Style

Backup Ring

Replacement for Jetstream Style
Rated up to 40,000 PSI



405505

Jetstream Style

Inlet Adapter - 3/8

Replacement for Jetstream 53709
Hardened stainless steel
Built with extra evacuation channel



405513

Jetstream Style

Swivel Housing

Replacement for Jetstream 53704
Aircraft grade aluminium
High quality construction



405515

Jetstream Style

Swivel Nut

Replacement for Jetstream 53711
Includes flange for safety shroud
High quality stainless steel



402000

Jetstream Style

Button Seal

Replacement for Jetstream 54059
Fits 9/16 barrels & tubing
Brass crush seal

40201D & 36200 Style 40,000 PSI Pump Repair

B Valve Seat 418100



Compatible with NLB® U-384

DESCRIPTION	BINGHAM #	OEM #
Valve Seat for 40201D & 36200 Series 40K NLB Style Pumps	418100	U-384

418100

Bulk pricing available



B Discharge Valve 418101



Compatible with NLB F-321

DESCRIPTION	BINGHAM #	OEM #
Discharge Valve for 40201D & 36200 Series 40K NLB Style Pumps	418101	F-321

418101

Bulk pricing available



B Suction Valve 418102



Compatible with NLB U-320

DESCRIPTION	BINGHAM #	OEM #
Suction Valve for 40201D & 36200 Series 40K NLB Style Pumps	418102	U-320

418102

Bulk pricing available



B Carbide Plunger 418103



Compatible with NLB U-353-05C

DESCRIPTION	BINGHAM #	OEM #
Carbide Plunger for 40201D & 36200 Series 40K NLB Style Pumps	418103	U-353-05C

418103

Bulk pricing available



NLB is a registered trademark of NLB Corp. Corporation
Bingham Industries & NLB have no affiliation and no endorsement by NLB is implied
Products shown on this page are manufactured by Bingham Industries

**MORE ITEMS FOR THIS
PRODUCT LINE ARE AVAILABLE**



B Single Seal Cartridge 418120

Picture
Not
Available

Compatible with NLB® U3375

DESCRIPTION	BINGHAM #	OEM #
Single Seal Type Cartridge for 40201D & 36200 Series 40K NLB Style Pumps	418120	U3375

418120

Bulk pricing available



B Packing Set 418300A

Picture
Not
Available

Compatible with NLB 1732

DESCRIPTION	BINGHAM #	OEM #
Packing Set for 40201D & 36200 Series 40K NLB Style Pumps	418300A	1732

418300A

Bulk pricing available



B Manifold Connector 402807



Compatible with NLB Style CM3679

DESCRIPTION	BINGHAM #	OEM #
9/16 Male HP x 1-1/8 Type M Swivel 40K NLB Style Pumps	402807	CM3679

402807

Bulk pricing available



B Bypass Repair



Compatible with NLB 40,000 PSI Pumps

DESCRIPTION	BINGHAM #	OEM #
Bypass Repair Kit; 40,000 PSI Compatible	540000A	BV36-115
Pin; Bypass Repair; 40,000 PSI	540001A	BV8167
Seat; Bypass Repair; 40,000 PSI	540002	BV8168

Bypass

Bulk pricing available



225 / 325 Series 40,000 PSI Pump Repair

B Valve Seat 418200



Compatible with NLB® CM30285

DESCRIPTION	BINGHAM #	OEM #
Valve Seat for 225/325 series 40,000 PSI Pumps	418200	CM30285

418200

Bulk pricing available



B Discharge Valve 418201



Compatible with NLB BM30284

DESCRIPTION	BINGHAM #	OEM #
Discharge Valve for 225/325 series 40,000 PSI Pumps	418201	BM30284

418201

Bulk pricing available



B Suction Valve 418202



Compatible with NLB BM30288

DESCRIPTION	BINGHAM #	OEM #
Suction Valve for 225/325 series 40,000 PSI Pumps	418202	BM30288

418202

Bulk pricing available



B Carbide Plunger 418204



Compatible with NLB Style BP30141

DESCRIPTION	BINGHAM #	OEM #
Carbide Plunger for 225/325 series 40,000 PSI Pumps	418204	BP30141

418204

Bulk pricing available



NLB is a registered trademark of NLB Corp. Corporation
Bingham Industries & NLB have no affiliation and no endorsement by NLB is implied
Products shown on this page are manufactured by Bingham Industries

**MORE ITEMS FOR THIS
PRODUCT LINE ARE AVAILABLE**



B Backup Bushing 418205

Picture
Not
Available

Compatible with NLB® BP30142

DESCRIPTION	BINGHAM #	OEM #
Backup Bushing for 225/325 series 40,000 PSI Pumps	418205	BP30142

418205

Bulk pricing available



B Lantern Support Ring 418215

Picture
Not
Available

Compatible with NLB BM30296

DESCRIPTION	BINGHAM #	OEM #
Lantern Support Ring for 225/325 series 40,000 PSI Pumps	418215	BM30296

418215

Bulk pricing available



B Throat Bushing 418219

Picture
Not
Available

Compatible with NLB BM30294

DESCRIPTION	BINGHAM #	OEM #
Throat Bushing for 225/325 series 40,000 PSI Pumps	418219	BM30294

418219

Bulk pricing available



B Seal Cartridge 418210



Compatible with NLB CM30297

DESCRIPTION	BINGHAM #	OEM #
Seal Cartridge for 225/325 series 40,000 PSI Pumps	418210	CM30297

418210

Bulk pricing available



NLB® COMPATIBLE

ULTRA QUALITY SYSTEMS & SPARES

B Gun Swivel Shaft



Compatible with 8000 & 8450 style guns

DESCRIPTION	BINGHAM #	OEM #
8000 Series Swivel Shaft	405802	DS10566
8450 Series Swivel Shaft	405882	DM26650

Shafts

Bulk pricing available



B Swivel Seal



Compatible with 8000 & 8450 style guns

DESCRIPTION	BINGHAM #	OEM #
8000 Series Swivel Seal	405804A	BS8809
8450 Series Swivel Seal	405880	BM26626

Seals

Bulk pricing available



B Brass Backup



Compatible with 8000 & 8450 style guns

DESCRIPTION	BINGHAM #	OEM #
8000 Series Brass Backup Ring	405803	BS8810
8450 Series Brass Backup Ring	405883	BM26620

Backups

Bulk pricing available



B Gun Lance



Compatible with 8000 & 8450 style guns

Bingham Industries builds custom lance sizes and configurations for all gun sizes. Please contact a sales representative for pricing on the exact length you require.

Lance

Bulk pricing available



NLB & Spinjet are registered trademarks of NLB Corp. Corporation
Bingham Industries & NLB have no affiliation and no endorsement by NLB is implied
Bingham Industries manufactures these products

**MORE ITEMS FOR THIS
PRODUCT LINE ARE AVAILABLE**



B 2-Jet Nozzle Carrier Assembly

Replacement parts for 2-Jet nozzle carrier systems



DESCRIPTION	BINGHAM #	OEM #
2- Jet Rotating Hub	405806	CA8397
Protective Cap	405805	CA8637
Nozzle Extender; 3/8-24	405812	BN7507

2-Jet System

Bulk pricing available



B SpinJet® Compatible Shaft

418400

Compatible with SpinJet floor & grate cleaners



DESCRIPTION	BINGHAM #	OEM #
SpinJet Compatible Shaft	418400	CS12754

418400

Bulk pricing available



B SpinJet Compatible Paddles

418450A

Compatible with SpinJet® floor & grate cleaners



DESCRIPTION	BINGHAM #	OEM #
Paddle Set for NLB Style SpinJet 40K	418450A	
7-Jet Paddle for NLB SpinJet	418450-7	DM13575
8-Jet Paddle for NLB SpinJet	418450-8	DM13576

418450A

Bulk pricing available



B Valve Repair

Compatible with BV3919 , BV8429 & BV3920



DESCRIPTION	BINGHAM #	OEM #
Valve Repair Pin for NLB Style SpinJet	418106	BV3919
Valve Repair Piston for NLB Style Bi-Mode	418108	BV8429
Valve Repair Piston for NLB Style SpinJet	418110	BV3920

Valve

Bulk pricing available



B Dump Target

418104

Compatible with NLB BV8469



DESCRIPTION	BINGHAM #	OEM #
Dump Target for NLB Type 40K Equipment	418104	BV8469

418104

Bulk pricing available



FLOW® COMPATIBLE

ULTRA QUALITY SYSTEMS & SPARES

*Flow is a registered trademark of Flow International Corporation
Bingham Industries & Flow have no affiliation and no endorsement by Flow is implied
Products shown on this page are manufactured by Bingham Industries*

B Check Valve Assembly

406100A



Compatible with Flow® 008412-1

DESCRIPTION	BINGHAM #	OEM #
Check Valve Assembly; 40,000 PSI	406100A	008412-1

406100A

Bulk pricing available



B Bearing Bushing

406012A



Compatible with Flow 009217-1

DESCRIPTION	BINGHAM #	OEM #
Bearing Bushing; 40,000 PSI & 55,000 PSI	406012A	009217-1

406012A

Bulk pricing available



B Dynamic Seal

Compatible with Flow 009219-1 & 016170-1



DESCRIPTION	BINGHAM #	OEM #
Dynamic Seal; 40,000 PSI Compatible	406016	009219-1
Dynamic Seal; 55,000 PSI Compatible	406316	016170-1

Dynamic

Bulk pricing available



B Dynamic Seal Carrier

406014



Compatible with Flow 009216-1

DESCRIPTION	BINGHAM #	OEM #
Dynamic Seal Carrier; 40,000 PSI Compatible	406014	009216-1

406014

Bulk pricing available





B End Cap 406025



Compatible with Flow® 010978-1

DESCRIPTION	BINGHAM #	OEM #
End Cap; 40,000 PSI	406025	010978-1

406025

Bulk pricing available



B Cylinder 406019



Compatible with Flow 008128-1

DESCRIPTION	BINGHAM #	OEM #
HP Cylinder; 40,000 PSI	406019	008128-1

406019

Bulk pricing available



B Manifold Backup Ring 406027



Compatible with Flow 006112-1

DESCRIPTION	BINGHAM #	OEM #
Manifold Backup Ring; 40,000 PSI & 55,000 PSI	406027	006112-1

406027

Bulk pricing available



B Manifold 406001



Compatible with Flow 006100-1

DESCRIPTION	BINGHAM #	OEM #
Manifold; 40,000 PSI Compatible	406001	006100-1

406001



FLOW® COMPATIBLE

ULTRA QUALITY SYSTEMS & SPARES

*Flow is a registered trademark of Flow International Corporation
Bingham Industries & Flow have no affiliation and no endorsement by Flow is implied
Products shown on this page are manufactured by Bingham Industries*

B Valve Repair Kit

406220A



Compatible with Flow® external compensating valves

DESCRIPTION	BINGHAM #	OEM #
Valve Maintenance Kit; 55,000 PSI	406220A	014490-1
Valve Poppet; 40,000 PSI	406205	010241-1
Valve Poppet; 55,000 PSI	406221	013411-1
Valve Seat; 40,000 PSI & 55,000 PSI	406222	011901-1
Static Seal; 40,000 PSI & 55,000 PSI	406201	006738-1
Breather Vent; 40,000 & 55,000 PSI	408001	A-0857-1

ECV

Bulk pricing available



B Valve Plunger



Compatible with Flow 010326-1 & 013428-1

DESCRIPTION	BINGHAM #	OEM #
Valve Plunger; 40,000 PSI Rated	406211A	010326-1
Valve Plunger; 55,000 PSI Rated	406223	013428-1

406222

Bulk pricing available



B Valve Bearing



Compatible with Flow A-11263 & 013413-1

DESCRIPTION	BINGHAM #	OEM #
Sleeve, Bearing; 40,000 PSI Compatible	406207	A-11263
Bearing, Plunger; 55,000 PSI Compatible	406225A	013413-1

Bearing

Bulk pricing available



B Valve Dynamic Seal

406228

Picture
Not
Available

Compatible with Flow 013414-1

DESCRIPTION	BINGHAM #	OEM #
Dynamic Seal; 55,000 PSI Compatible	406228	013414-1

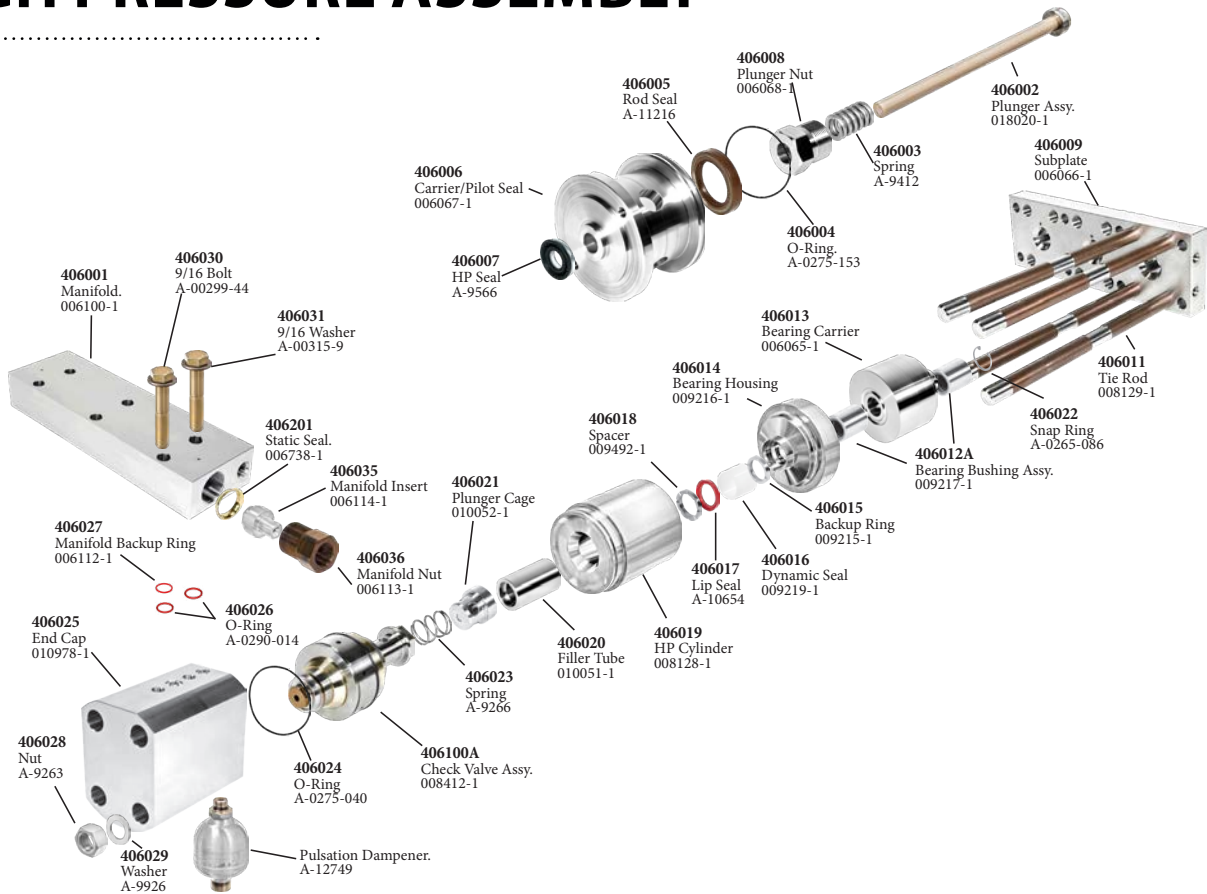
406228

Bulk pricing available





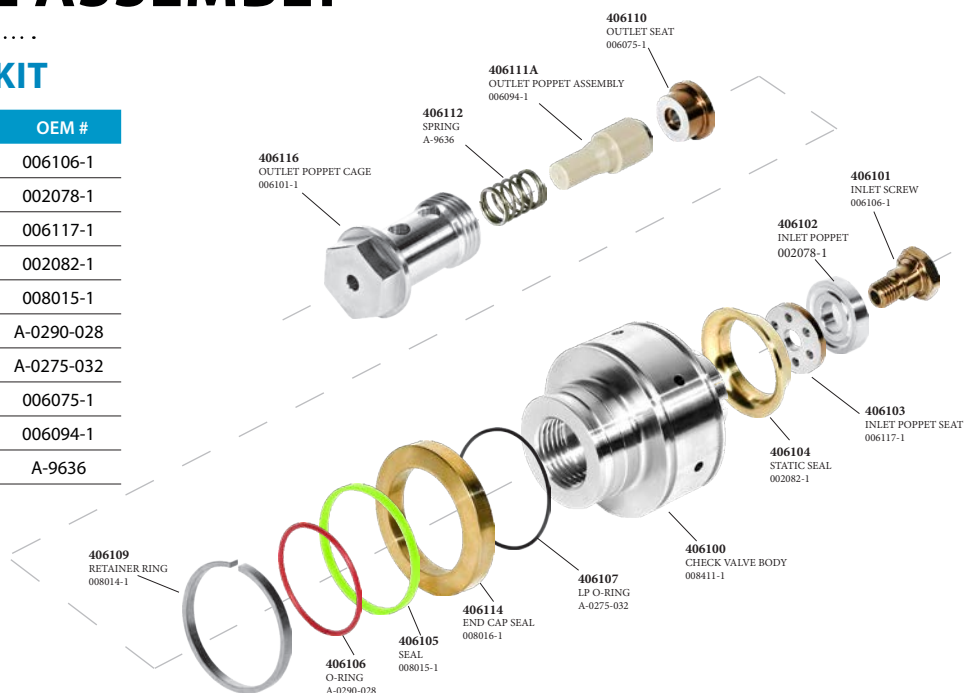
HIGH PRESSURE ASSEMBLY



CHECK VALVE ASSEMBLY

CHECK VALVE REPAIR KIT

DESCRIPTION	BINGHAM #	OEM #
Screw, Inlet; Check Valve	406101	006106-1
Poppet, Inlet; Check Valve	406102	002078-1
Seat, Inlet; Check Valve	406103	006117-1
Static Seal; Check Valve	406104	002082-1
Seal, Check Valve	406105	008015-1
O-ring; Check Valve	406106	A-0290-028
O-ring; Check Valve	406107	A-0275-032
Seat, Outlet; Check Valve	406110	006075-1
Poppet, Outlet; Check Valve	406111A	006094-1
Spring, Outlet; Check Valve	406112	A-9636



MORE ITEMS FOR THIS PRODUCT LINE ARE AVAILABLE

FLOW® COMPATIBLE

ULTRA QUALITY SYSTEMS & SPARES

*Flow is a registered trademark of Flow International Corporation
Bingham Industries & Flow have no affiliation and no endorsement by Flow is implied
Products shown on this page are manufactured by Bingham Industries*

40,000 PSI

DESCRIPTION	BINGHAM #	OEM #
Manifold, 40,000 PSI	406001	006100-1
Plunger; 40,000 PSI & 55,000 PSI	406002	018020-1
Spring, Plunger; 40,000 PSI & 55,000 PSI	406003	A-9412
O-Ring; 40,000 PSI & 55,000 PSI	406004	A-0275-153
Rod Seal; 40,000 PSI & 55,000 PSI	406005	A-11216
Carrier, Pilot Seal; 40,000 PSI	406006	006067-1
HP Seal; 40,000 PSI & 55,000 PSI	406007	A-9566
Nut, Plunger; 40,000 PSI & 55,000 PSI	406008	006068-1
Sub Plate; 40,000 PSI	406009	006066-1
Tie Rod; 40,000 PSI	406011	008129-1
Bearing Bushing; 40,000 PSI & 55,000 PSI	406012A	009217-1
Bearing Carrier; 40,000 PSI	406013	006065-1
Seal Carrier; 40,000 PSI	406014	009216-1
Backup Ring; 40,000 PSI	406015	009215-1
Dynamic Seal, 40,000 PSI	406016	009219-1
Lip Seal; 40,000 PSI & 55,000 PSI	406017	A-10654
Spacer, U-Cup; 40,000 PSI	406018	009492-1
Cylinder, HP; 40,000 PSI	406019	008128-1
Filler Tube; 40,000 PSI	406020	010051-1
Plunger Cage; 40,000 PSI	406021	010052-1
Retaining Ring; 40,000 PSI	406022	A-0265-086
Spring; 40,000 PSI	406023	A-9266
O-ring; 40,000 PSI & 55,000 PSI	406024	A-0275-040
End Cap; 40,000 PSI	406025	010978-1
O-ring; 40,000 PSI & 55,000 PSI	406026	A-0290-014
Backup Ring; 40,000 PSI & 55,000 PSI	406027	006112-1
Nut, Hex; 40,000 PSI & 55,000 PSI	406028	A-21080-1
Washer; 40,000 PSI & 55,000 PSI	406029	A-9926

DESCRIPTION	BINGHAM #	OEM #
Bolt; 40,000 PSI & 55,000 PSI	406030	A-00299-44
Washer; 40,000 PSI & 55,000 PSI	406031	A-00315-9
O-Ring; 40,000 PSI & 55,000 PSI	406032	A-0275-313
Adapter, Pony Rod; 40,000 PSI & 55,000 PSI	406033	006069-1
Pony Rod; 40,000 PSI	406034	006071-1
Insert, Manifold; 40,000 PSI & 55,000 PSI	406035	006114-1
Adapter; 40,000 PSI & 55,000 PSI	406036	006113-1
O-ring; 40,000 PSI	406046	A-0275-126
O-ring; 40,000 PSI	406047	A-0275-127
O-ring; 55,000 PSI	406048	A-0275-128
O-ring; 55,000 PSI	406049	A-0275-129
O-ring; 55,000 PSI	406050	A-0275-208
Check Valve Body; 40,000 PSI	406100	008411-1
Check Valve Assembly; 40,000 PSI	406100A	008412-1
Inlet Screw; 40,000 PSI	406101	006106-1
Inlet Poppet; 40,000 PSI & 55,000 PSI	406102	002078-1
Inlet Seat; 40,000 PSI & 55,000 PSI	406103	006117-1
Static Seal; 40,000 PSI	406104	002082-1
HP Seal; 40,000 PSI & 55,000 PSI	406105	008015-1
O-ring; 40,000 PSI & 55,000 PSI	406106	A-0290-028
O-ring; 40,000 PSI & 55,000 PSI	406107	A-0275-032
Retaining Ring; 40,000 PSI & 55,000 PSI	406109	008014-1
Outlet Seat; 40,000 PSI	406110	006075-1
Poppet Assembly; 40,000 PSI	406111A	006094-1
Spring, Outlet; 40,000 PSI	406112	A-9636
End Cap Seal; 40,000 PSI & 55,000 PSI	406114	008016-1
Outlet Cage; 40,000 PSI & 55,000 PSI	406116	006101-1
Rebuild Kit; 40,000 PSI	406139A	007680-1

COMPENSATING VALVE

DESCRIPTION	BINGHAM #	OEM #
Static Seal; 40,000 PSI & 55,000 PSI	406201	006738-1
Poppet; 40,000 PSI	406205	010241-1
Bearing Sleeve; 40,000 PSI	406207	A-11263
Rod Seal; 40,000 PSI	406210	A-00621-36
Plunger; 40,000 PSI	406211A	010326-1
Poppet; 55,000 PSI	406221	013411-1
Seat; 40,000 PSI & 55,000 PSI	406222	011901-1
Plunger; 55,000 PSI	406223	013428-1
Bearing, Plunger; 55,000 PSI	406225A	013413-1
Dynamic Seal; 55,000 PSI	406228	013414-1
Maintenance Kit; 55,000 PSI	406220A	014490-1

55,000 PSI

DESCRIPTION	BINGHAM #	OEM #
Check Valve Body; 55,000 PSI	406300	016895-1
Dynamic Seal; 55,000 PSI	406316	016170-1
Inlet Screw; 55,000 PSI	406350	013515-1
Inlet Seat; 55,000 PSI	406353	016896-1
Inlet Spring; 55,000 PSI	406358	013515-1
Outlet Seat; 55,000 PSI	406360	014641-1



B Check Valve Body 406300



Compatible with Flow® 016895-1

DESCRIPTION	BINGHAM #	OEM #
Check Valve Body; 55,000 PSI	406300	016895-1

406300

Bulk pricing available



B Valve Poppet 408101A



Compatible with Flow 006263-1

DESCRIPTION	BINGHAM #	OEM #
Valve Poppet; 40,000 PSI & 55,000 PSI	408101A	006263-1

408101A

Bulk pricing available



B Valve Seat 408107



Compatible with Flow 006262-1

DESCRIPTION	BINGHAM #	OEM #
Valve Seat; 40,000 PSI & 55,000 PSI	408107	006262-1

408107

Bulk pricing available



B Pilot Valve Operator 408072A



Compatible with Flow A-14544

DESCRIPTION	BINGHAM #	OEM #
Pilot Valve Operator; 40,000 PSI & 55,000 PSI	408072A	A-14544

408072A

Bulk pricing available



FLOW® COMPATIBLE

ULTRA QUALITY SYSTEMS & SPARES

*Flow & Hornet are registered trademarks of Flow International Corporation
Bingham Industries & Flow have no affiliation and no endorsement by Flow is implied
Products shown on this page are manufactured by Bingham Industries*

B Full Swivel Assembly

405200A



Compatible with Flow® 008344-1

DESCRIPTION	BINGHAM #	OEM #
Full Swivel Assembly; 40,000 PSI	405200A	008344-1

405200A

Bulk pricing available



B Shaft Assembly

405202A



Compatible with Flow 008619-1

DESCRIPTION	BINGHAM #	OEM #
Shaft Assembly; 40,000 PSI	405202A	008169-1

405202A

Bulk pricing available



B Swivel Seal Assembly

405000A



Compatible with Flow 303204-01

DESCRIPTION	BINGHAM #	OEM #
Swivel Seal Assembly; 40,000 PSI & 55,000 PSI	405000A	303204-01

405000A

Bulk pricing available



B Brass Backup Ring

405203A



Compatible with Flow 303270-01

DESCRIPTION	BINGHAM #	OEM #
Brass Backup Ring; 40,000 PSI	405203A	303270-01

405203A

Bulk pricing available





B 5-Jet Nozzle Carrier

401502



Compatible with Flow® 009290-1

DESCRIPTION	BINGHAM #	OEM #
Nozzle Body, 5-Jet; 40,000 PSI & 55,000 PSI	401502	009290-1

401502

Bulk pricing options are available



B Hornet® Compatible Nozzles

2808 Series



Compatible with Flow 010084 Series

DESCRIPTION	BINGHAM #	OEM #
Nozzle, 3/8-24; 40,000 PSI & 55,000 PSI	2808 Series	010084 Series

2808 Series

Bulk pricing options are available



ADDITIONAL SPARES

DESCRIPTION	BINGHAM #	OEM #
Inlet Adapter; 40,000 PSI	405005	303201-1
Housing Seal; 40,000 PSI & 55,000 PSI	405206	A-10729
Housing; 40,000 PSI & 55,000 PSI	405213	006288-1
Cap; 40,000 PSI & 55,000 PSI	405215	006289-1
Shield Bushing; 40,000 PSI	405217	008166-1
Sleeve Bushing; 40,000 PSI	405218	009433-1
Bushing Seal; 40,000 PSI	405219	A-9833
Hand Tool Seal; 40,000 PSI	405225	010030-1
Trigger Spring; 40,000 PSI	405227	A-1606



STONEAGE® COMPATIBLE

ULTRA QUALITY SYSTEMS & SPARES

B 44,000 PSI Cartridge

324020A



Compatible with StoneAge® BC 705

DESCRIPTION	BINGHAM #	OEM #
Cartridge Assembly; 44,000 PSI	324020A	BC 705

324020A

Bulk pricing available



B Seal Assembly

Compatible with StoneAge BC 712-O, BC 512-O & FT 012



DESCRIPTION	BINGHAM #	OEM #
Seal Assembly; 44,000 PSI	324024A	BC 712-O
Seal Assembly; 44,000 PSI	324010A	BC 512-O
Seal Assembly; 22,000 PSI	322004A	FT 012

Seal

Bulk pricing available



B Seat

Compatible with StoneAge BC 711, BC 511 & FT011-UH



DESCRIPTION	BINGHAM #	OEM #
Seat; 44,000 PSI	324023	BC 711
Seat; 44,000 PSI	324015	BC 511
Seat; 22,000 PSI	322003	FT 011-UH

Seat

Bulk pricing available



B Wear Rings

Compatible with StoneAge BA 030 & BA 330



DESCRIPTION	BINGHAM #	OEM #
Wear Ring; 4"	300014	BA 030
Wear Ring; 6"	300016	BA 330

Wear Ring

Bulk pricing available





B OS7™ Compatible Nozzles 2810 Series



Compatible with Stoneage® OS7 Series

DESCRIPTION	SAPPHIRE	PSI RATING	BINGHAM #	OEM #
7/16-20 Sapphire Nozzle	.004-.043 in	55,000 PSI	2810 SERIES	OS7 SERIES
	0.1-1.1 mm	3,800 BAR		

2810 Series

Bulk pricing available



B 1/8 NPT Style - AP2™ Compatible 2815 Series



Used in a wide variety of self-rotating tools, Bingham Industries has taken it up another notch by introducing sapphire loaded NPT cleaning tips for the best level of performance possible.

Designed with an internal cavity that provides the most cohesive stream of water possible, these 1/8 NPT style tips do not require internal flow straighteners to provide the highest level of cutting and cleaning performance in the industry.

DESCRIPTION	SAPPHIRE	PSI RATING	BINGHAM #	OEM #
1/8 NPT Sapphire Nozzle	.004-.043 in	22,000 PSI	2815 SERIES	AP2 SERIES
	0.1-1.1 mm	1,500 BAR		

2815 Series

Bulk pricing available



B 1/4 NPT Style - AP4™ Compatible 2816 Series



Designed as a replacement for AP4 style nozzles, the Bingham 1/4 NPT Style nozzle is not only better performing than drilled nozzles - it's also more affordable!

For situations that require a hard hitting nozzle day after day, the sapphire loaded 1/4 NPT style is the only choice. Made from high quality stainless steel and featuring a Swiss made sapphire, these nozzles consistently throw a tighter, harder stream of water than any drilled tip available.

DESCRIPTION	SAPPHIRE	PSI RATING	BINGHAM #	OEM #
1/4 NPT Sapphire Nozzle	.004-.043 in	22,000 PSI	2816 SERIES	AP4 SERIES
	0.1-1.1 mm	1,500 BAR		

2816 Series

Bulk pricing available



MORE ITEMS FOR THIS PRODUCT LINE ARE AVAILABLE

*StoneAge is a registered trademark of Stoneage, Inc.
AP2, AP4 and OS7 are claimed trademarks of Stoneage, Inc.
Bingham Industries & Stoneage have no affiliation and no endorsement by Stoneage is implied.
Products shown on this page are manufactured by Bingham Industries*

HOSES

ULTRA QUALITY SYSTEMS & SPARES

B Rubber Waterblast Hoses

Save money with high quality rubber water blast hoses

Designed with 4 (15K) or 6 (20K) spiral steel layers for added performance and life span, rubber waterblast hoses are low cost and durable in demanding environments



WORKING PRESSURE	HOSE ID	LENGTH	FITTINGS	COVER	BINGHAM #
18,000 PSI	3/8"	25 Ft	3/8 NPTM	Rubber	10M18-25-38RR
18,000 PSI	3/8"	50 Ft	3/8 NPTM	Rubber	10M18-50-38RR
16,000 PSI	1/2"	25 Ft	1/2 NPTM	Rubber	13M16-25-12RR
16,000 PSI	1/2"	50 Ft	1/2 NPTM	Rubber	13M16-50-12RR
14,500 PSI	3/4"	25 Ft	3/4 NPTM	Rubber	19M15-25-34RR
14,500 PSI	3/4"	50 Ft	3/4 NPTM	Rubber	19M15-25-37RR
20,000 PSI	1/2"	25 Ft	1/2 NPTM	Rubber	13M20-25-12RR
20,000 PSI	1/2"	50 Ft	1/2 NPTM	Rubber	13M20-50-12RR

***NPT Style adapters available. Contact your sales representative for pricing and more information. ***



B 5mm Thermoplastic Hose



Quality first with thermoplastic hose from Parker Polyflex

Bingham Industries is committed to only providing the highest quality HP and UHP thermoplastic blasting hoses. We offer Parker Polyflex exclusively

WORKING PRESSURE	HOSE ID	LENGTH	FITTINGS	COVER	BINGHAM #
40,600 PSI	5mm	15 Ft	3/8 Nipple	None	5M40-15-38NC
40,600 PSI	5mm	15 Ft	9/16 Type M	None	5M40-15-96NC
40,600 PSI	5mm	15 Ft	3/8 Nipple	Spiral PVC	5M40-15-38AG
40,600 PSI	5mm	15 Ft	9/16 Type M	Spiral PVC	5M40-15-96AG
40,600 PSI	5mm	15 Ft	3/8 Nipple	Burst Shield	5M40-15-38BS
40,600 PSI	5mm	15 Ft	9/16 Type M	Burst Shield	5M40-15-96BS
40,600 PSI	5mm	25 Ft	3/8 Nipple	None	5M40-25-38NC
40,600 PSI	5mm	25 Ft	9/16 Type M	None	5M40-25-96NC
40,600 PSI	5mm	25 Ft	3/8 Nipple	Spiral PVC	5M40-25-38AG
40,600 PSI	5mm	25 Ft	9/16 Type M	Spiral PVC	5M40-25-96AG
40,600 PSI	5mm	25 Ft	3/8 Nipple	Burst Shield	5M40-25-38BS
40,600 PSI	5mm	25 Ft	9/16 Type M	Burst Shield	5M40-25-96BS

WORKING PRESSURE	HOSE ID	LENGTH	FITTINGS	COVER	BINGHAM #
40,600 PSI	5mm	35 Ft	3/8 Nipple	None	5M40-35-38NC
40,600 PSI	5mm	35 Ft	9/16 Type M	None	5M40-35-96NC
40,600 PSI	5mm	35 Ft	3/8 Nipple	Spiral PVC	5M40-35-38AG
40,600 PSI	5mm	35 Ft	9/16 Type M	Spiral PVC	5M40-35-96AG
40,600 PSI	5mm	35 Ft	3/8 Nipple	Burst Shield	5M40-35-38BS
40,600 PSI	5mm	35 Ft	9/16 Type M	Burst Shield	5M40-35-96BS
40,600 PSI	5mm	50 Ft	3/8 Nipple	None	5M40-50-38NC
40,600 PSI	5mm	50 Ft	9/16 Type M	None	5M40-50-96NC
40,600 PSI	5mm	50 Ft	3/8 Nipple	Spiral PVC	5M40-50-38AG
40,600 PSI	5mm	50 Ft	9/16 Type M	Spiral PVC	5M40-50-96AG
40,600 PSI	5mm	50 Ft	3/8 Nipple	Burst Shield	5M40-50-38BS
40,600 PSI	5mm	50 Ft	9/16 Type M	Burst Shield	5M40-50-96BS

The selection listed above are the most commonly requested items.

***Please contact your sales representative for any items not listed above. ***





B 8mm Thermoplastic Hose



WORKING PRESSURE	HOSE ID	LENGTH	FITTINGS	COVER	BINGHAM #
44,000 PSI	8mm	25 Ft	9/16 Nipple	None	8M44-25-96NC
44,000 PSI	8mm	25 Ft	7/8 Type M	None	8M44-25-78NC
44,000 PSI	8mm	25 Ft	9/16 Nipple	Spiral PVC	8M44-25-96AG
44,000 PSI	8mm	25 Ft	7/8 Type M	Spiral PVC	8M44-25-78AG
44,000 PSI	8mm	50 Ft	9/16 Nipple	None	8M44-50-96NC
44,000 PSI	8mm	50 Ft	7/8 Type M	None	8M44-50-78NC
44,000 PSI	8mm	50 Ft	9/16 Nipple	Spiral PVC	8M44-50-96AG
44,000 PSI	8mm	50 Ft	7/8 Type M	Spiral PVC	8M44-50-78AG

WORKING PRESSURE	HOSE ID	LENGTH	FITTINGS	COVER	BINGHAM #
44,000 PSI	8mm	66 Ft	9/16 Nipple	None	8M44-66-96NC
44,000 PSI	8mm	66 Ft	7/8 Type M	None	8M44-66-78NC
44,000 PSI	8mm	66 Ft	9/16 Nipple	Spiral PVC	8M44-66-96AG
44,000 PSI	8mm	66 Ft	7/8 Type M	Spiral PVC	8M44-66-78AG
44,000 PSI	8mm	100 Ft	9/16 Nipple	None	8M44-99-96NC
44,000 PSI	8mm	100 Ft	7/8 Type M	None	8M44-99-78NC
44,000 PSI	8mm	100 Ft	9/16 Nipple	Spiral PVC	8M44-99-96AG
44,000 PSI	8mm	100 Ft	7/8 Type M	Spiral PVC	8M44-99-78AG

B 13mm Thermoplastic Hose



WORKING PRESSURE	HOSE ID	LENGTH	FITTINGS	COVER	BINGHAM #
26,000 PSI	13mm	25 Ft	9/16 Nipple	None	13M26-25-96NC
26,000 PSI	13mm	25 Ft	3/4 Nipple	None	13M26-25-34NC
26,000 PSI	13mm	25 Ft	1" Type M	None	13M26-25-10NC
26,000 PSI	13mm	25 Ft	9/16 Nipple	Spiral PVC	13M26-25-96AG
26,000 PSI	13mm	25 Ft	3/4 Nipple	Spiral PVC	13M26-25-37AG
26,000 PSI	13mm	25 Ft	1" Type M	Spiral PVC	13M26-25-10AG
26,000 PSI	13mm	50 Ft	9/16 Nipple	None	13M26-50-96NC
26,000 PSI	13mm	50 Ft	3/4 Nipple	None	13M26-50-34NC
26,000 PSI	13mm	50 Ft	1" Type M	None	13M26-50-10NC
26,000 PSI	13mm	50 Ft	9/16 Nipple	Spiral PVC	13M26-50-96AG
26,000 PSI	13mm	50 Ft	3/4 Nipple	Spiral PVC	13M26-50-34AG
26,000 PSI	13mm	50 Ft	1" Type M	Spiral PVC	13M26-50-10AG

WORKING PRESSURE	HOSE ID	LENGTH	FITTINGS	COVER	BINGHAM #
26,000 PSI	13mm	66 Ft	9/16 Nipple	None	13M26-66-96NC
26,000 PSI	13mm	66 Ft	3/4 Nipple	None	13M26-66-34NC
26,000 PSI	13mm	66 Ft	1" Type M	None	13M26-66-10NC
26,000 PSI	13mm	66 Ft	9/16 Nipple	Spiral PVC	13M26-66-96AG
26,000 PSI	13mm	66 Ft	3/4 Nipple	Spiral PVC	13M26-66-34AG
26,000 PSI	13mm	66 Ft	1" Type M	Spiral PVC	13M26-66-10AG
26,000 PSI	13mm	100 Ft	9/16 Nipple	None	13M26-99-96NC
26,000 PSI	13mm	100 Ft	3/4 Nipple	None	13M26-99-34NC
26,000 PSI	13mm	100 Ft	1" Type M	None	13M26-99-10NC
26,000 PSI	13mm	100 Ft	9/16 Nipple	Spiral PVC	13M26-99-96AG
26,000 PSI	13mm	100 Ft	3/4 Nipple	Spiral PVC	13M26-99-34AG
26,000 PSI	13mm	100 Ft	1" Type M	Spiral PVC	13M26-99-10AG

The selection listed above represents the most commonly sold items.
 Please contact your sales representative for any items not listed above.



SAFETY EQUIPMENT

ULTRA QUALITY SYSTEMS & SPARES

UHP rated safety suits

- Protection rated up to 40,000 PSI from accidental swipe of rotational water jets
- Chin-to-foot protection including special neck coverage and overlapping wrist protection
- Water repellent acrylic fiber outer shell
- Proprietary UHP rated internal fabric material with 100% UHP protection
- Easy to clean
- ISO 9001 & 14001 certified manufacturing
- Made in America



Safety Warning

Never intentionally hit someone with a stream of high pressure water

No UHP safety equipment is capable of preventing all injuries. If worn properly, this suit can lessen the severity of injury from accidental exposure to UHP water jets. All safety equipment must be worn in strict accordance with the manufacturers recommended instructions. If you are unfamiliar with the current safety practices for the equipment you own, please contact the manufacturer.

Proprietary Fabric

Bingham Industries safety suits utilize a proprietary fabric with UHP resistant fibers woven between the shell and internal layers of the garment. This fabric is produced in accordance with ISO 9001 & 14001 manufacturing guidelines and is thoroughly tested using the same reported guidelines as other UHP rated safety suit manufacturers use. 100% of all areas on Bingham Industries safety suits are made with UHP resistant fabrics.

SAFETY TEST RESULTS

PRESSURE		FLOW		NOZZLE TESTED		ROTATION	STANDOFF		LINEAR SPEED		RESULT
BAR	PSI	L/MIN	GPM	MM	INCH	RPM	MM	IN	M/S	IN/SEC	
1034	15,000	11.74	3.1	.86	.034	2800	76	3	.38	15	No Full Penetration
1862	27,000	11.74	3.1	.76	.030	2800	76	3	.38	15	No Full Penetration
2068	30,000	11.74	3.1	.74	.029	2800	76	3	.38	15	No Full Penetration
2758	40,000	11.74	3.1	.68	.027	2800	76	3	.38	15	No Full Penetration

Built In Neck Protection



All UHP blast jackets come with built in neck protection as part of the product design. These high collars are UHP water resistant and will keep the operator safe from UHP water jet cuts in the event of an accidental swipe.

Full Wrist Coverage



Each suit is designed with a full coverage wrist cuff to provide overlapping protection between the end of the jacket and the operators blasting gloves. Wrist cuffs allow full mobility during equipment operation.

Comfortable Design



Bingham Industries safety suits are designed to provide comfort and advanced functionality while worn. Features like half-length zippers, double breast Velcro and quick release snaps make for a product that is comfortable to wear and easy to maneuver in.



Full UHP Rated Safety Suit

- Includes jacket (1), overall/ bib (1), gaiter set (1) and UHP glove set (1)
- Designed to protect against accidental UHP water contact
- Easy to clean
- Breathable, flexible material for easy movement

Note: Model is 6' ft (183cm) tall and is wearing a L/XL suit

BINGHAM #	SIZE	RECOMMEND SIZE
790001	S / M	Up to 5'9 (175cm) or 200 lbs (91KG)
790002	L / XL	Up to 6'5 (195cm) or 260 lbs (118KG)
790003	XXL / 3XL	Over 6'5(195cm) or 260 lbs (118KG)



Bib | Overall

Provides full lower body protection in a comfortable design.

BINGHAM #	SIZE
790004	S / M
790005	L / XL
790006	XXL / 3XL



Boot Covers & Gloves

One size fits all design with complete mobility and a quick release Velcro strap.

BINGHAM #	SIZE
790007	Boot Cover - All
790009	UHP Gloves - All

New Technology

FORM | FIT | FUNCTION

Bingham Industries safety suits are designed with operator comfort in mind. Every suit is flexible and allows the operator full range of motion without bulky plates inside of the fabric like other suits. The Bingham Industries safety suit will provide comfort for operators during an entire work day.

100% UHP water resistant coverage on all areas of our proprietary jackets, bibs and boot gaiters provide operators more safety than any other suit on the market.

- Breathable fabric
- Easy to clean
- No internal plates
- Full body protection



PRODUCT HIGHLIGHTS

TERMS & CONDITIONS

ULTRA QUALITY SYSTEMS & SPARES

Bingham Industries Warranty

Limited Warranty

All products manufactured by Bingham Industries are free from material defects and workmanship for the life of the product, provided it is used in a normal and reasonable manner and in accordance with all operating instructions. All products sold by Bingham Industries that are manufactured by another entity will include the original manufacturers warranty but will not provide any additional product warranty.

Exclusive Remedy

Should any warranty product fail during the warranty period, Bingham Industries may conduct an examination that discloses, in Bingham Industries sole judgement, whether the item in is question is defective in material and/or factory workmanship. At the conclusion of the examination, Bingham Industries may elect to repair or replace the defective product at Bingham Industries sole discretion. Repairs or replacements are to occur at a Bingham Industries facility or customer workshop approved and authorized by Bingham Industries. Labor is furnished only when the product or item in question is returned to a Bingham Industries facility or when travel and expenses are paid by the purchaser. Freight, travel and expenses incurred in connection with repair or warranty are excluded from this warranty and shall be paid by the purchaser.

For more information:

Contact our corporate offices:

17401 147th St. S.E.

Monroe, WA 98272

360-863-1170

Bingham Industries Product Information

Origin & OEM Clarification

All products listed in this catalog, unless specifically noted, have been designed, manufactured and tested by Bingham Industries. Any reference to other manufacturers, companies, brands or trade names are strictly for informational purposes. None of the manufacturers or companies listed within this document endorse Bingham Industries product line, nor does Bingham Industries imply that any affiliation or endorsement exists.

Trademark Assignment

The following corporate names, brands, registered trademarks and claimed trademarks are the respective property of their companies, as listed below. They appear within this document for informational purposes only.

NLB & Spin Jet are registered trademarks of NLB Corp. of Wixom, MI.

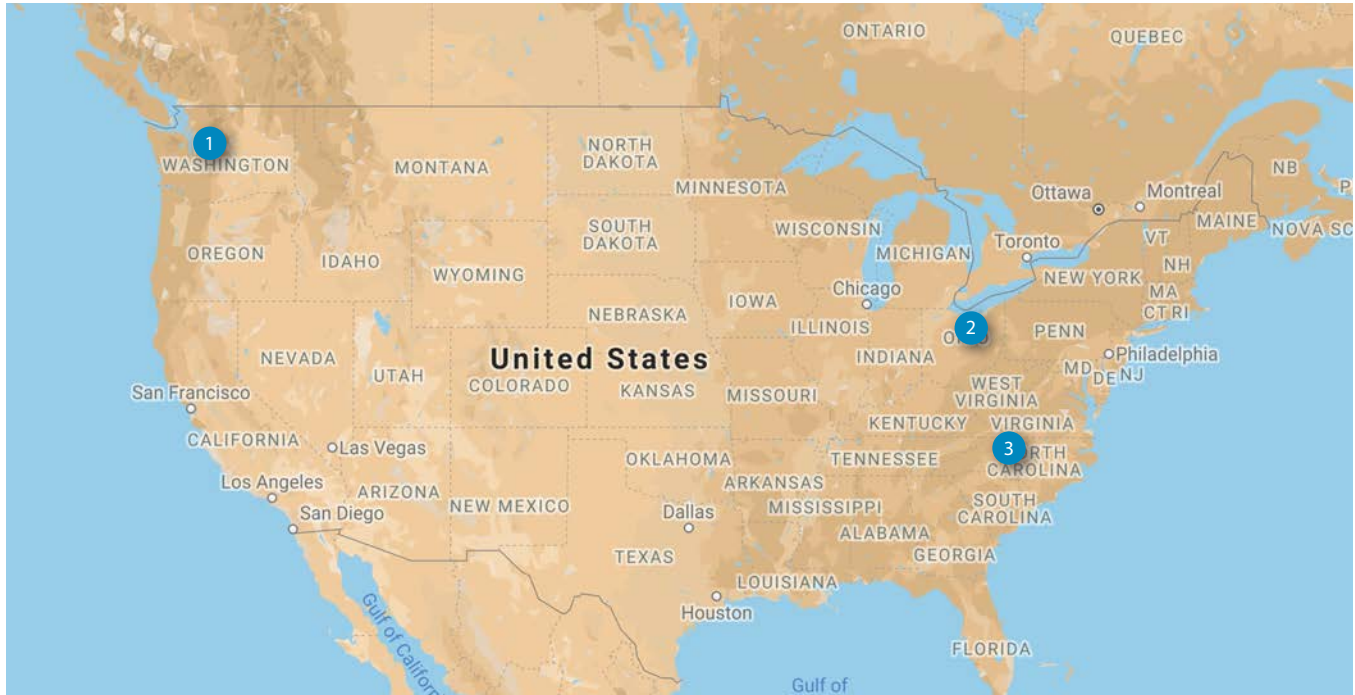
StoneAge is a registered trademark of StoneAge, Inc. of Durango, Co. AP2, AP4, APF4, OS4 & OS7 are claimed trademarks of StoneAge, Inc. of Durango, CO.

Flow, Hornet & Husky are registered trademarks of Flow International Corporation of Kent, WA.

Jetstream is a trademark of Jetstream of Houston, LLP. of Houston, TX.

High Cohesive is a registered trademark of A.M. Gatti, Inc. of Trenton, NJ.

Bingham Industries Locations



- 1 Corporate Headquarters**
17401 147th St. S.E. Monroe, WA 98272
- Telephone: 360-863-1170
Fax: 360-863-8719
E-mail: sales@binghamindustries.com
www.binghamindustries.com

- 2 Canton, OH**
- Telephone: 330-224-4161
Fax: 360-863-8719
E-mail: sales@binghamindustries.com
www.binghamindustries.com

- 3 Winston-Salem, NC**
- Telephone: 336-430-3687
Fax: 360-863-8719
E-mail: sales@binghamindustries.com
www.binghamindustries.com



BINGHAM

ULTRA QUALITY SYSTEMS & SPARES

Seattle | Canton | Winston-Salem

Phone: (360) 863-1170

E-mail: Sales@binghamindustries.com

www.BinghamIndustries.com